

ARCHETYPE ARCHITECTS

48 UNION WHARF PORTLAND, MAINE 04101
207.772.6022 archetype@archetypepa.com

PREPARED FOR:
**GREAT FALLS
CONSTRUCTION
& WESTBROOK
DEVELOPMENT
CORPORATION**

CONSULTANT:

ISSUE STATUS:
**SUBMISSION TO TOWN
FOR FINAL SITE /
SUBDIVISION**

REVISION:

PROJECT:
**WDCJCS
SUBDIVISION**

55 HIGH STREET
WINDHAM, ME 04062

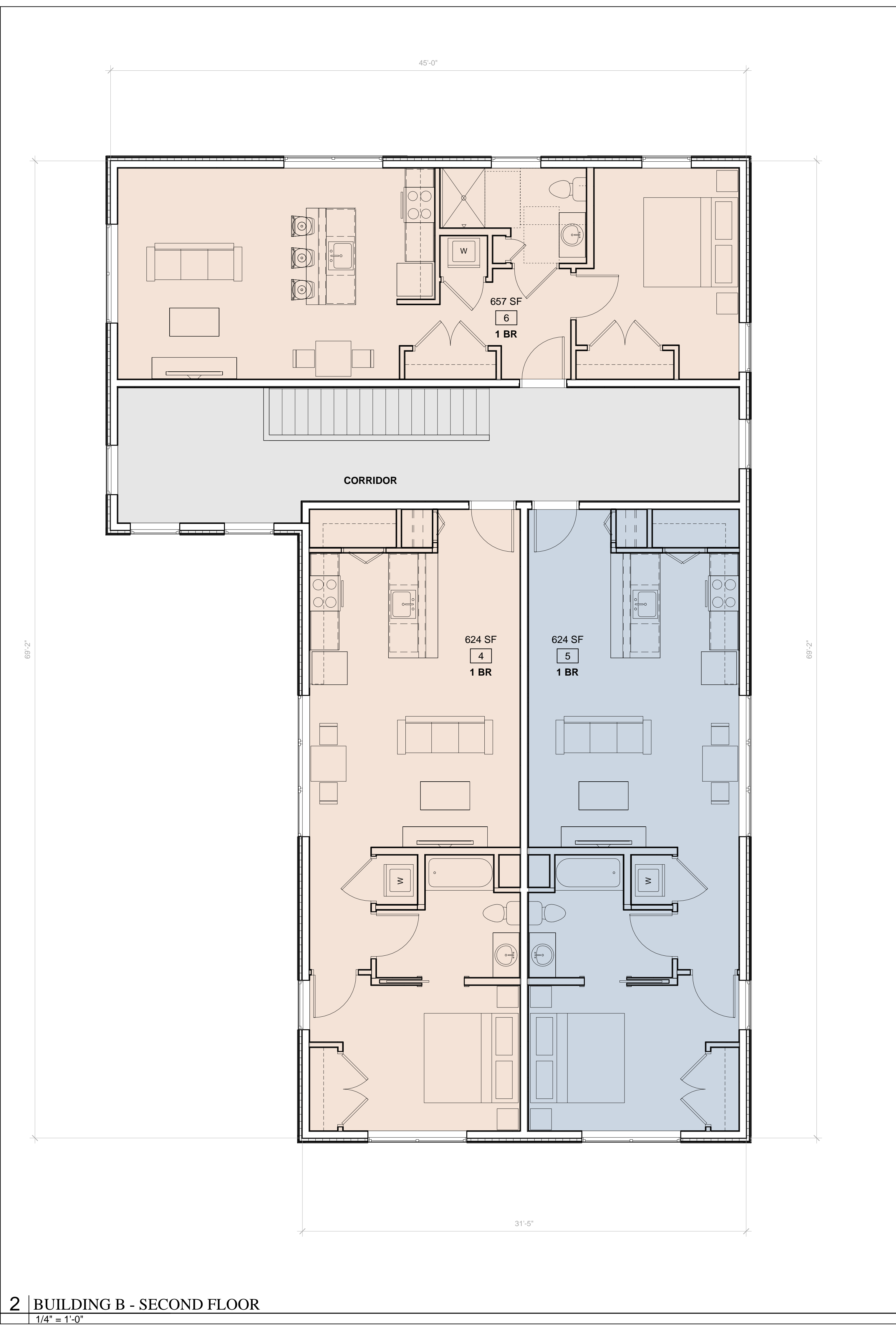
BUILDING A - FLOOR PLANS

DATE OCT 10, 2024

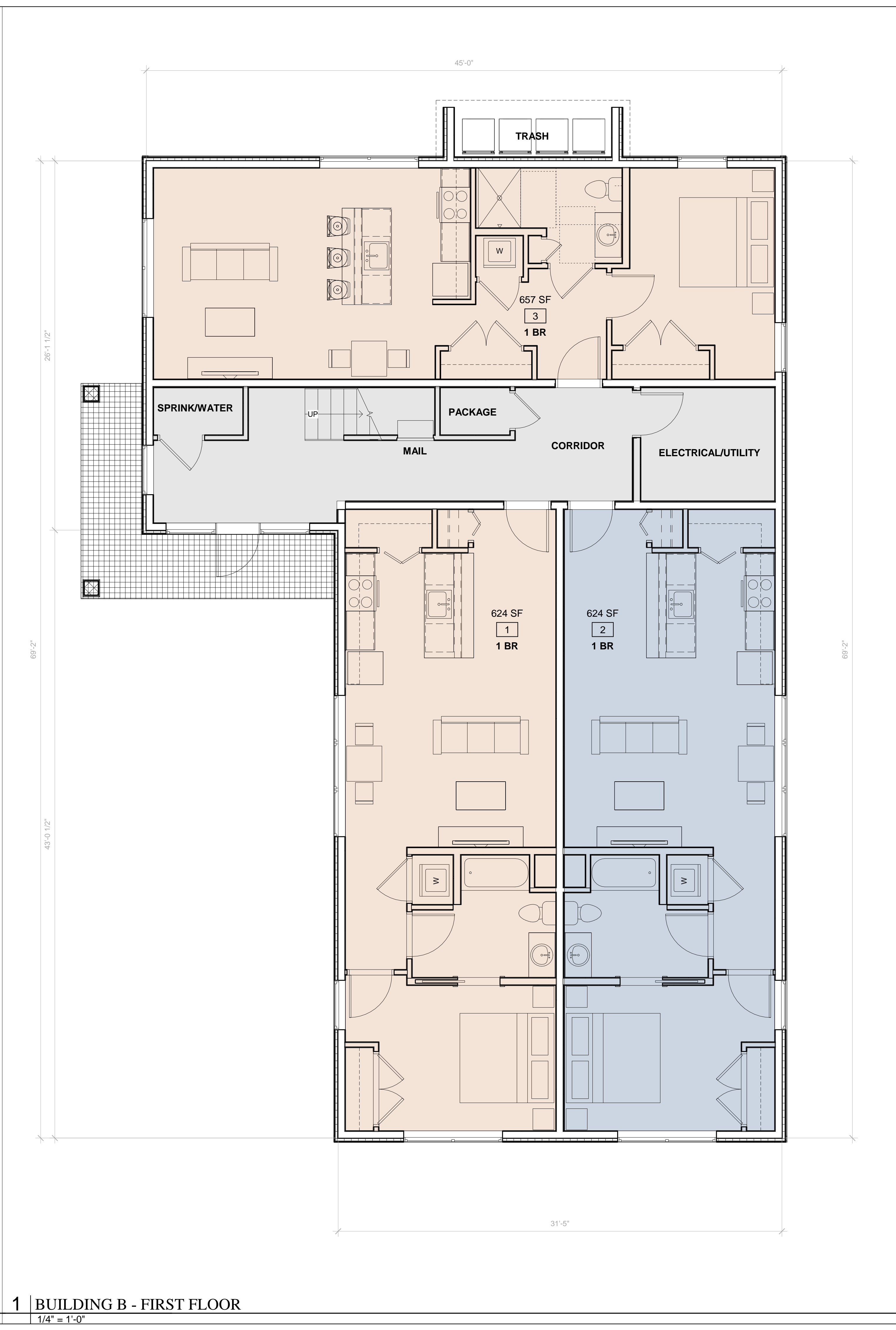
CHECKED BY

A1.1

SCALE 1/4" = 1'-0"



2 | BUILDING B - SECOND FLOOR
1/4" = 1'-0"



1 | BUILDING B - FIRST FLOOR
1/4" = 1'-0"

ARCHETYPE ARCHITECTS

48 UNION WHARF PORTLAND, MAINE 04101
207.772.6022 archetype@archetypepa.com

PREPARED FOR:
**GREAT FALLS
CONSTRUCTION
& WESTBROOK
DEVELOPMENT
CORPORATION**

CONSULTANT:

ISSUE STATUS:
**SUBMISSION TO TOWN
FOR FINAL SITE /
SUBDIVISION**

REVISION:

PROJECT:
**WDCJCS
SUBDIVISION**

55 HIGH STREET
WINDHAM, ME 04062

BUILDING B - FLOOR PLANS

DATE OCT 10, 2024

CHECKED BY

A1.2

SCALE 1/4" = 1'-0"



1 | BUILDING A - PERSPECTIVE



2 | BUILDING B - PERSPECTIVE

ARCHETYPE ARCHITECTS

48 UNION WHARF PORTLAND, MAINE 04101
207.772.6022 archetype@archetypepa.com

PREPARED FOR:
**GREAT FALLS
CONSTRUCTION
& WESTBROOK
DEVELOPMENT
CORPORATION**

CONSULTANT:

ISSUE STATUS:
**SUBMISSION TO TOWN
FOR FINAL SITE /
SUBDIVISION**

REVISION:

PROJECT:
**WDCJCS
SUBDIVISION**

55 HIGH STREET
WINDHAM, ME 04062

**BUILDING A & B
RENDERINGS**

DATE OCT 10, 2024

CHECKED BY

A2.0

SCALE



FENESTRATION %
EXTERIOR WALL - 831.11 SF
FENESTRATION (WINDOWS & DOOR) - 143.50 SF
143.50 / 831.11 = 17.3%

1 | BUILDING A - SIDE ELEVATION

1/4" = 1'-0"



FENESTRATION %
EXTERIOR WALL - 692.04 SF
FENESTRATION (WINDOWS & DOOR) - 217 SF
217 / 692.04 = 31.4%

(d) The primary facade and all facades visible from public ways for shall have an area of fenestration a minimum of 25% of the total area of street facing facades. The rhythm, size and proportion of door, window and other openings shall be proportional to the overall massing of the building.

2 | BUILDING A - WEST ELEVATION (HIGH STREET)

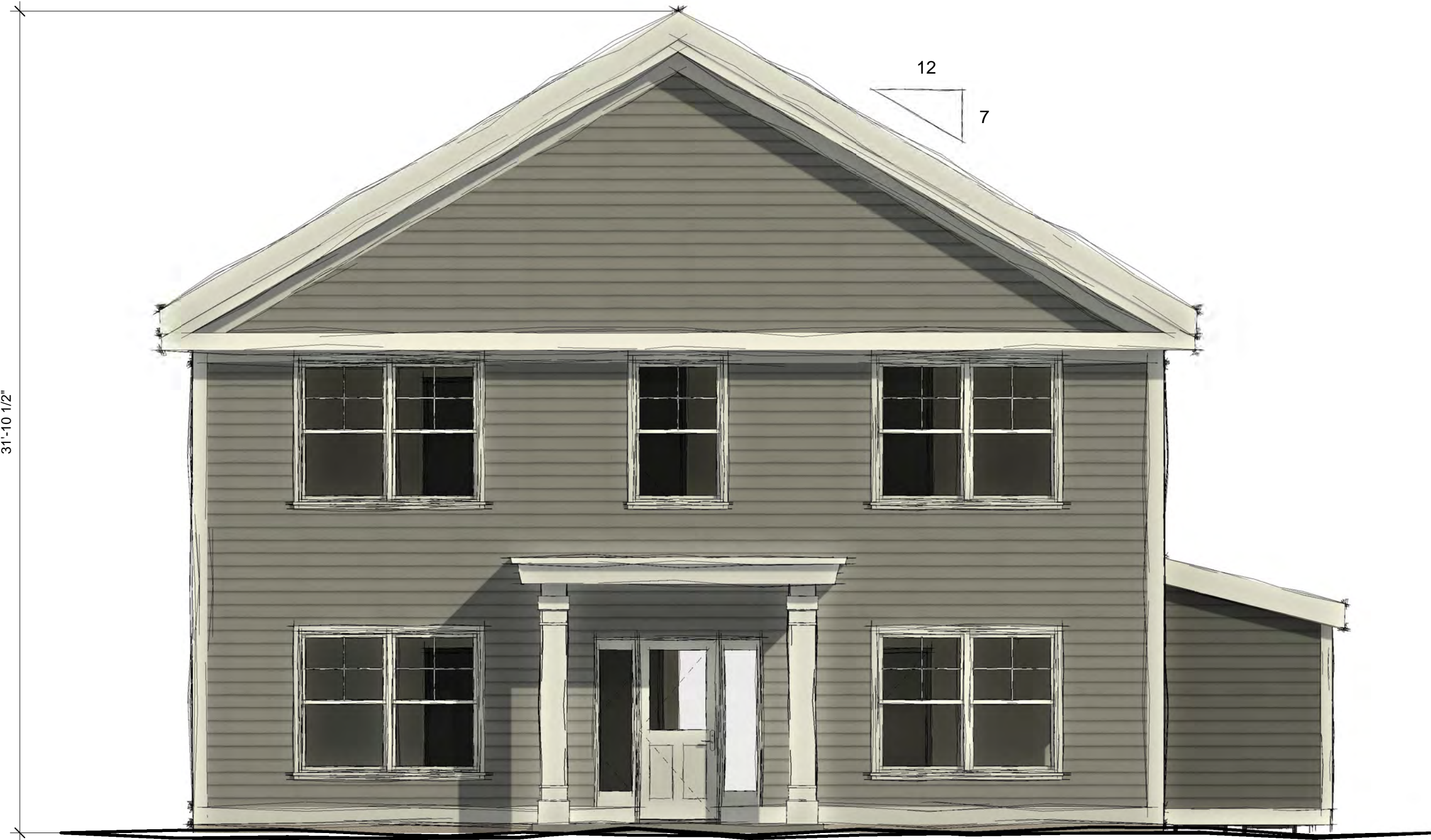
1/4" = 1'-0"



FENESTRATION %
EXTERIOR WALL - 598.62 SF
FENESTRATION (WINDOWS & DOOR) - 131.75 SF
131.75 / 598.62 = 22%

4 | BUILDING A - SIDE ELEVATION (MECH)

1/4" = 1'-0"



FENESTRATION %
EXTERIOR WALL - 692.04 SF
FENESTRATION (WINDOWS & DOOR) - 217 SF
217 / 692.04 = 31.4%

3 | BUILDING A - EAST ELEVATION

1/4" = 1'-0"

ARCHETYPE ARCHITECTS

48 UNION WHARF PORTLAND, MAINE 04101
207.772.6022 archetype@archetypepa.com

PREPARED FOR:
**GREAT FALLS
CONSTRUCTION
& WESTBROOK
DEVELOPMENT
CORPORATION**

CONSULTANT:

ISSUE STATUS:
**SUBMISSION TO TOWN
FOR FINAL SITE /
SUBDIVISION**

REVISION:

PROJECT:
**WDCJCS
SUBDIVISION**

55 HIGH STREET
WINDHAM, ME 04062

**BUILDING A -
ELEVATIONS**

DATE OCT 10, 2024

CHECKED BY

A2.1

SCALE 1/4" = 1'-0"



FENESTRATION %
EXTERIOR WALL - 1,024.12 SF
FENESTRATION (WINDOWS & DOOR) - 253.02 SF
253.02 / 433 = 24.7%

2 BUILDING B - WEST ELEVATION
1/4" = 1'-0"



FENESTRATION %
EXTERIOR WALL - 1,428.35 SF
FENESTRATION (WINDOWS & DOOR) - 264.00 SF
264.00 / 1,428.35 = 18.5%

3 BUILDING B - NORTH ELEVATION
1/4" = 1'-0"

ARCHETYPE
ARCHITECTS

48 UNION WHARF PORTLAND, MAINE 04101
207.772.6022 archetype@archetypepepa.com

PREPARED FOR:
GREAT FALLS
CONSTRUCTION
& WESTBROOK
DEVELOPMENT
CORPORATION

CONSULTANT:

ISSUE STATUS:
SUBMISSION TO TOWN
FOR FINAL SITE /
SUBDIVISION

REVISION:

PROJECT:
WDCJCS
SUBDIVISION

55 HIGH STREET
WINDHAM, ME 04062

BUILDING B -
ELEVATIONS

DATE OCT 10, 2024

CHECKED BY

A2.2

SCALE 1/4" = 1'-0"



FENESTRATION %
EXTERIOR WALL - 840.97 SF
FENESTRATION (WINDOWS & DOOR) - 134.75 SF
134.75 / 840.97 = 16.0%

2 | BUILDING B - EAST ELEVATION
1/4" = 1'-0"



FENESTRATION %
EXTERIOR WALL - 1,470.20 SF
FENESTRATION (WINDOWS & DOOR) - 206.25 SF
206.25 / 1,470.20 = 14.0%

1 | BUILDING B - SOUTH ELEVATION
1/4" = 1'-0"

ARCHETYPE
ARCHITECTS

48 UNION WHARF PORTLAND, MAINE 04101
207.772.6022 archetype@archetypepa.com

PREPARED FOR:
GREAT FALLS
CONSTRUCTION
& WESTBROOK
DEVELOPMENT
CORPORATION

CONSULTANT:

ISSUE STATUS:
SUBMISSION TO TOWN
FOR FINAL SITE /
SUBDIVISION

REVISION:

PROJECT:
WDCJCS
SUBDIVISION

55 HIGH STREET
WINDHAM, ME 04062

BUILDING B -
ELEVATIONS

DATE OCT 10, 2024

CHECKED BY

A2.3

SCALE 1/4" = 1'-0"