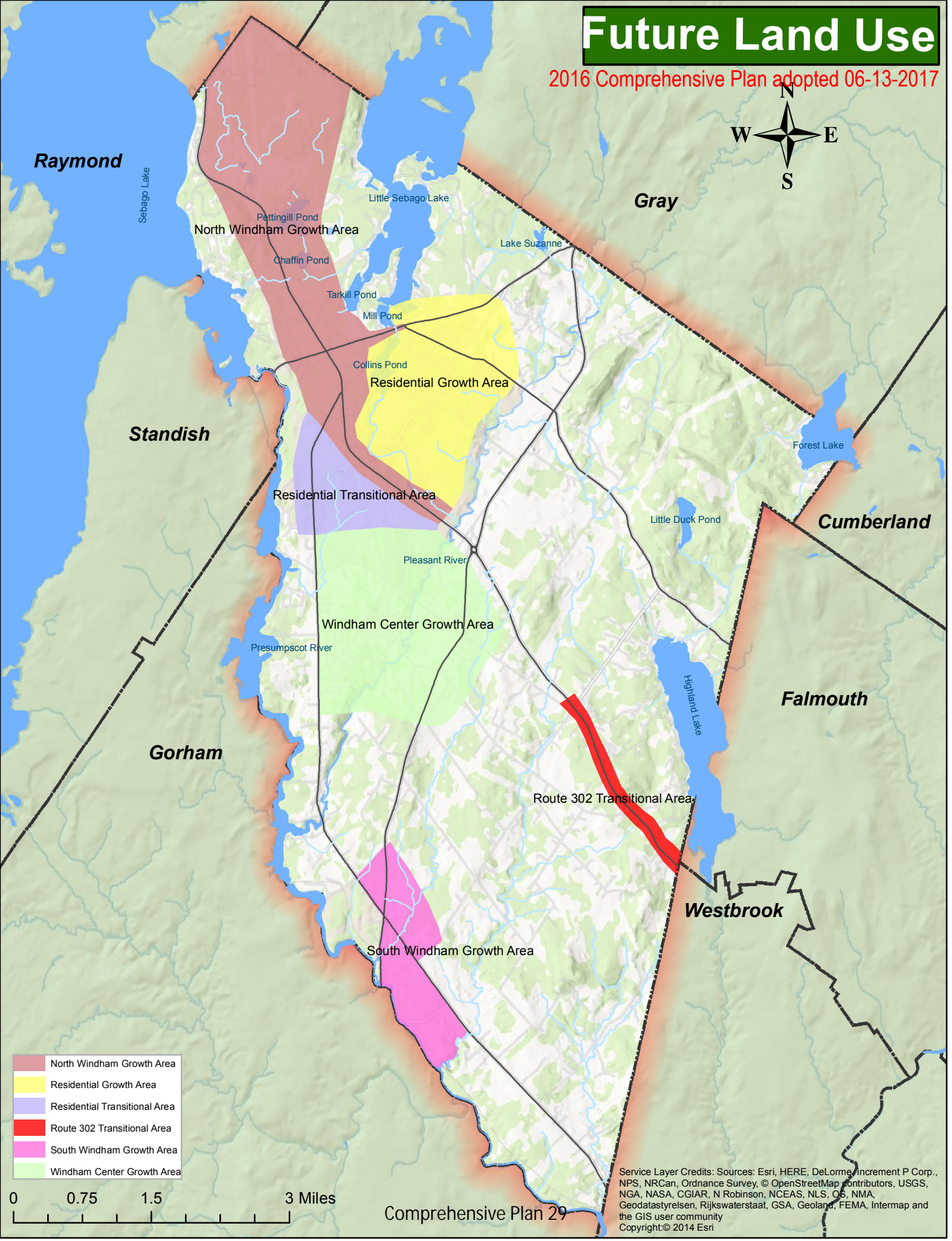


# Future Land Use

2016 Comprehensive Plan adopted 06-13-2017



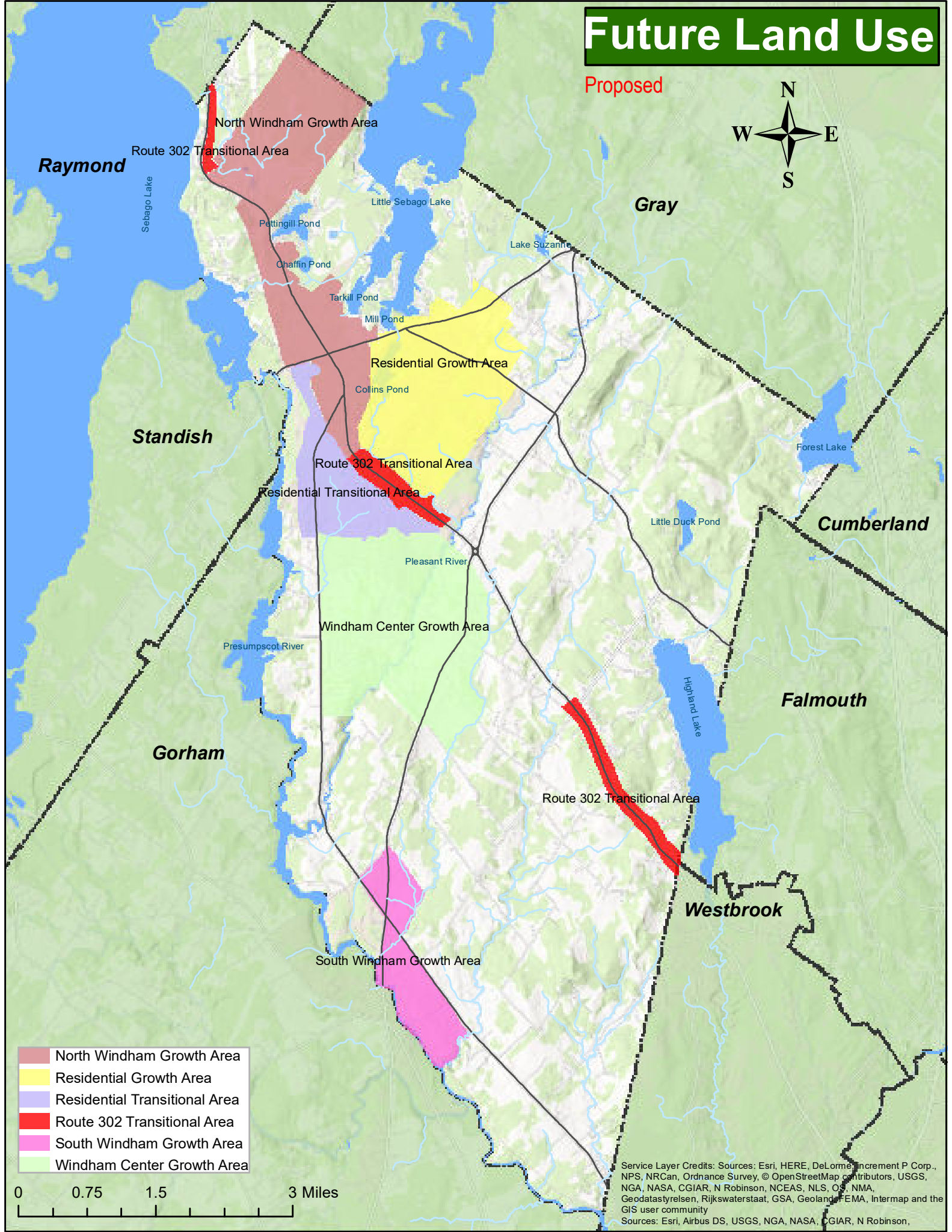
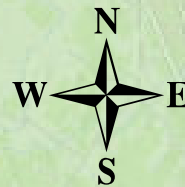
- North Windham Growth Area
- Residential Growth Area
- Residential Transitional Area
- Route 302 Transitional Area
- South Windham Growth Area
- Windham Center Growth Area

0 0.75 1.5 3 Miles

Service Layer Credits: Sources: Esri, HERE, DeLorme, InCREMENT P Corp., NPS, NRCAN, Ordnance Survey, © OpenStreetMap contributors, USGS, NGA, NASA, CGIAR, N Robinson, NCEAS, NLS, OS, NMA, Geodatastyrelsen, Rijkswaterstaat, GSA, Geoland, FEMA, Intermap and the GIS user community  
Copyright: © 2014 Esri

# Future Land Use

Proposed

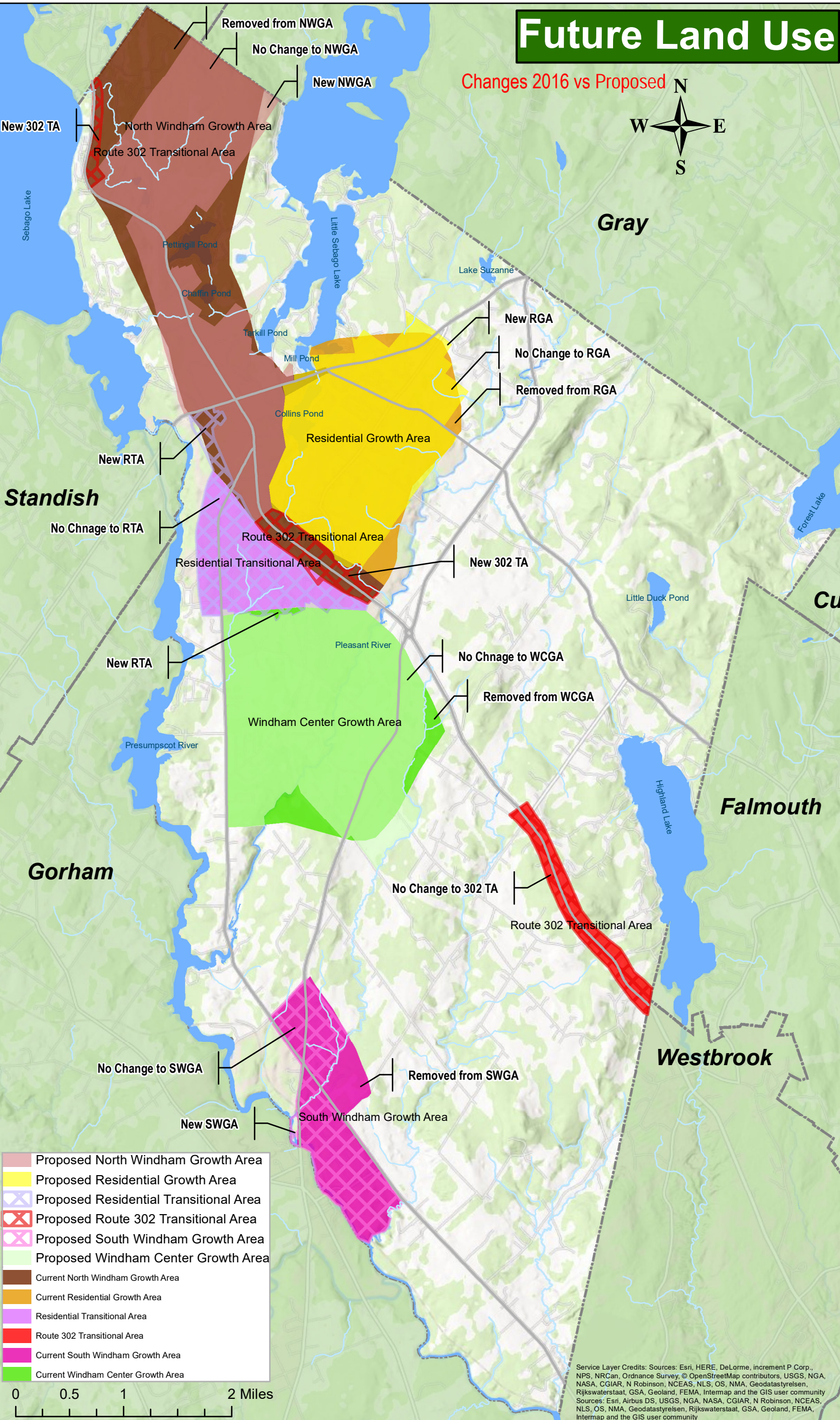


- North Windham Growth Area
- Residential Growth Area
- Residential Transitional Area
- Route 302 Transitional Area
- South Windham Growth Area
- Windham Center Growth Area

Service Layer Credits: Sources: Esri, HERE, DeLorme, InCREMENT P Corp., NPS, NRCAN, Ordnance Survey, © OpenStreetMap contributors, USGS, NGA, NASA, CGIAR, N Robinson, NCEAS, NLS, O.S., NMA, Geodatastyrelsen, Rijkswaterstaat, GSA, Geoland, FEMA, Intermap and the GIS user community  
Sources: Esri, Airbus DS, USGS, NGA, NASA, CGIAR, N Robinson,

# Future Land Use

Changes 2016 vs Proposed



- Proposed North Windham Growth Area
- Proposed Residential Growth Area
- Proposed Residential Transitional Area
- Proposed Route 302 Transitional Area
- Proposed South Windham Growth Area
- Proposed Windham Center Growth Area
- Current North Windham Growth Area
- Current Residential Growth Area
- Residential Transitional Area
- Route 302 Transitional Area
- Current South Windham Growth Area
- Current Windham Center Growth Area



Service Layer Credits: Sources: Esri, HERE, DeLorme, increment P Corp., NPS, NRCAn, Ordnance Survey, © OpenStreetMap contributors, USGS, NGA, NASA, CGIAR, N Robinson, NCEAS, NLS, OS, NMA, Geodastystrelsen, Rijkswaterstaat, GSA, Geoland, FEMA, Intermap and the GIS user community  
 Sources: Esri, Airbus DS, USGS, NGA, NASA, CGIAR, N Robinson, NCEAS, NLS, OS, NMA, Geodastystrelsen, Rijkswaterstaat, GSA, Geoland, FEMA, Intermap and the GIS user community