

LEGEND

-72	EXISTING	-65	PROPOSED
	- CONTOURS		- CONTOURS
	- WETLAND		- PROJECT BENCHMARK
	- TREE LINE		- TREE LINE
			- CULVERT
			- TRANSFORMER
			- UNDERGROUND ELECTRIC

As-built elevation determined by field survey on September 24, 2023.



Adam N. Robinson

PLISGA & DAY
LAND SURVEYORS
 72 MAIN STREET
 BANGOR, MAINE
 DATE: September 21, 2023
 PROJ. NO. 17010
 Email: info@Wemapit.com
 Phone: (207) 947-0019
 Toll-Free: 1-800-734-0019
 DRAWING FILE: 17010_As-Built 20230921.dwg
www.Wemapit.com

Record Drawing

.\july 30 stamp.jpg

ISSUED FOR CONSTRUCTION

No.	Revision Description	Drwn	Date
1	Revised per comments by Town of Windham, DEP & ACOE.	BFG	10-9-18
2	Revised per comments by DEP for Stormwater.	BFG	10-22-18
3	Revised per comments by Gorill Palmer 2-14-19.	BFG	2-20-19
4	Revised access road culvert crossing.	BFG	8-4-20

Drwn By:	BFG
Desg By:	BFG / KJB
Chkd By:	KJB
Apprd By:	KJB
Date:	7-30-18

ACHERON ENGINEERING SERVICES
 Engineering, Environmental & Geologic Consultants
 www.AcheronEngineering.com
 147 Main St.
 Newport, ME 04953
 (207)-368-5700

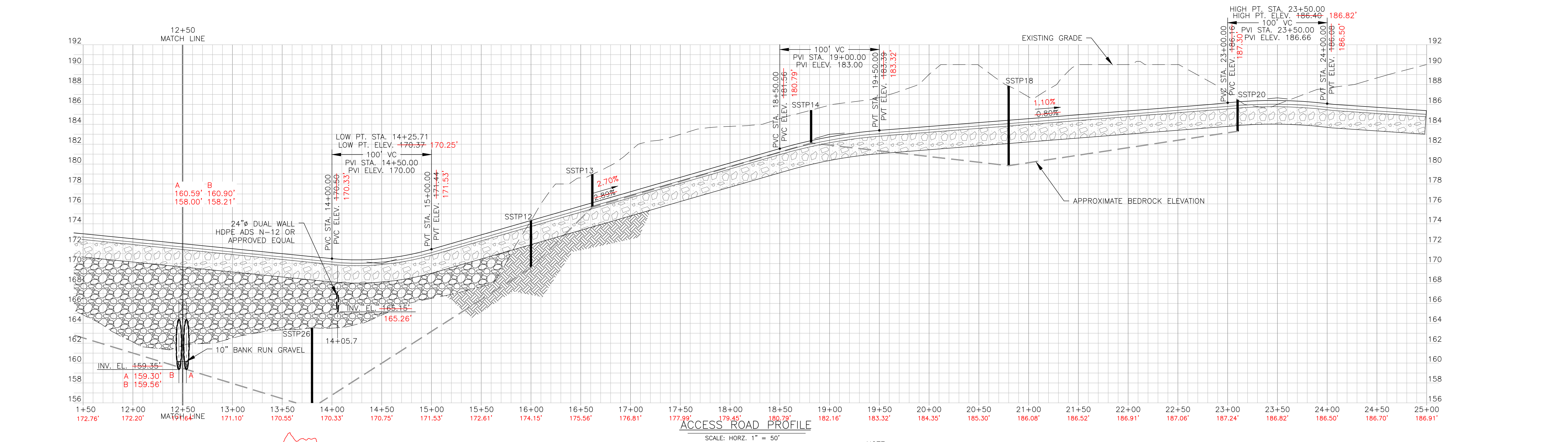
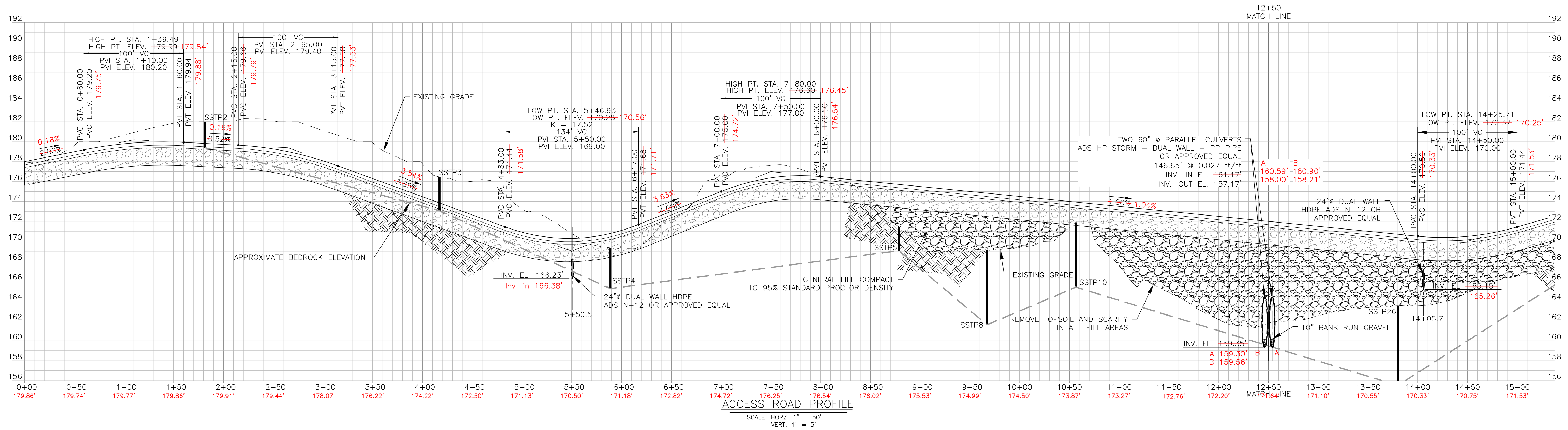
2466 Powell Rd.
 Brooksville, FL 34602
 (352)-796-6236
 Acheron International, Inc.

Subdivision Access Road
 Site Plan
 Durant Homestead
 Chute Road, Windham, Maine
 Matt Hancock Properties
 PO Box 295
 Casco, Maine 04015

Job Number:
79800

Drawing No:
C-9

Sheet 10 of 16



NOTE: SHATTER BEDROCK 4 FT BELOW ROAD SUBBASE PER MAINE DEPARTMENT OF TRANSPORTATION SPECIFICATION, WHEN WATER POCKETS ARE CREATED DURING BEDROCK REMOVAL FOR PENNYWHISTLE DRIVE.

As-built elevation determined by field survey on September 24, 2023.



PLISGA & DAY
LAND SURVEYORS
72 MAIN STREET
BANGOR, MAINE
DATE: September 21, 2023
PROJ. NO. 17010
www.WeMapIt.com

Record Drawing

Adam N. Robinson

No.	Revision Description	Chkd	Date
1	Revised per comments by Town of Windham, DEP & ACCO.	BFG	10-9-18
2	Revised per comments by DEP for Stormwater.	BFG	10-22-18
3	Revised per comments by Gorill Palmer 2-14-19.	BFG	2-20-19
4	Revised access road culvert crossing.	BFG	8-4-20

Drawn By: BFG
Desg By: BFG / KJB
Chkd By: KJB
Apprd By: KJB
Date: 7-30-18

ACHERON ENGINEERING SERVICES
Engineering, Environmental & Geologic Consultants
www.AcheronEngineering.com
2466 Powell Rd.
Brooksville, FL 34602
(352)-796-6236
Acheron International, Inc.

Subdivision Access Road Profile
Durant Homestead
Chute Road, Windham, Maine
Matt Hancock Properties
PO Box 295
Casco, Maine 04015

Job Number: 79800
Drawing No: C-10
Sheet 11 of 16

ISSUED FOR CONSTRUCTION

.\july 30 stamp.jpg