

## FIELD OBSERVATION REPORT

Project: Sebago Heights Subdivision – Phase 3&4

Client: Town of Windham

GP Field Rep: Benjamin Grondin (BG)

Weather: Clear

Time onsite: 1:45 PM – 4:00 PM

Contractor: R.J. Grondin

Distribution: File, Amanda Lessard, Lisa Fisher, Doug Fortier, Ben Smith, Greg McCormack, Robert Grondin, Ray Allard

GPCEI Project No: 2786.69

Visit Date: October 24, 2016

Report Date: October 31, 2016

Temp. Range: 50 – 55 °F

---

### **Purpose of Visit**

- Final inspection for roadway acceptance.

### **Recent Storm Events**

- Friday, October 21<sup>st</sup> through Sunday, October 23<sup>rd</sup>.

### **Work Conducted by GP Representative**

- Inspected structures, culvert inlets/outlets, and drainage swales for obstructions, erosion, and vegetation growth.

### **Discussions & Observations**

#### **Thrush Terrace (Phase 3)**

- Bare area near +/- sta. 2+50 to +/- sta. 3+00 RT. Area shall be re-seeded to establish vegetation.
- Riprap area for CB28 inlet has leaves and sediment. Leaves and sediment shall be removed from the riprap area.
- Vegetation is sparse from +/- sta. 11+50 to +/- sta. 12+50 LT along fence line. Area shall be re-seeded.
- CB28 – Approximately 8-10" of sediment in sump.
- CB28A – Approximately 1-2" of sediment in sump.
- CB28B – <1" of sediment in sump.
- CB29 – Approximately 1-2" of sediment in sump.
- CB30 – Approximately 1-2" of sediment in sump. Brick collar appears to be in good condition.
- CB30 Outlet to swale – Appears to be functioning properly and does not appear obstructed.
- CB31 – Approximately 3-4" of sediment in sump. Brick collar appears to be in good condition.
- CB32 – Approximately 1-2" of sediment in sump. Brick collar appears to be in good condition.
- CB33 – Approximately 1-2" of sediment in sump.
- CB33 Outlet to swale – Vegetation growth has obstructed outlet flow. Vegetation shall be removed.
- CB34 – Approximately 4-5" of sediment in sump.
- CB34 Outlet to swale – Vegetation growth at outlet. Leaves and other debris also appear to be obstructing the outlet flow. Vegetation, leaves, and debris shall be removed.
- See photos 1 – 3.
- All CBs with 2" or more of sediment in the sump shall be cleaned out.

#### **Harvest Hill (Phase 3)**



- Sediment in riprap apron for CB21 outlet. Sediment shall be removed from the riprap apron.
- Vegetation is sparse at the edge of pavement from +/- sta. 17+00 to 21+00 RT. Area shall be re-seeded.
- Vegetation is sparse from +/- sta. 22+00 to 24+50 RT on drainage swale slope. Area shall be re-seeded.
- Roadway crossing culvert near +/- sta. 22+40 LT has sediment and vegetation obstructing the inlet in the riprap apron. Sediment and vegetation shall be removed from the riprap apron.
- Bare area at sidewalk near +/- sta. 22+40 LT. Area shall be re-seeded to establish vegetation.
- Vegetation is sparse behind CB26 near transformer. Area shall be re-seeded.
- Trash/debris in the riprap apron near +/- sta. 59+00 LT. Trash/debris shall be removed from the riprap apron.
- CB21 – Approximately 10+” of sediment in sump. Brick collar appears to be in good condition.
- CB24 – Approximately 10+” of sediment in sump.
- CB25 – Approximately 1-2” of sediment in sump. Brick collar appears to be in good condition.
- CB26 – Approximately 3-4” of sediment in sump.
- CB27 – <1” of sediment in sump. Brick collar appears to be in good condition.
- CB46 – <1” of sediment in sump. Brick collar appears to be in good condition.
- CB47 – Approximately 1-2” of sediment in sump. Brick collar appears to be in good condition.
- CB48 – Approximately 1-2” of sediment in sump. Brick collar appears to be in good condition.
- CB49 – Approximately 5-6” of sediment in sump. Brick collar appears to be in good condition.
- See photos 4 – 8.
- All CBs with 2” or more of sediment in the sump shall be cleaned out.

#### Harvest Hill (Phase 4)

- Vegetation is sparse from +/- sta. 25+50 to +/- sta. 27+50 RT between the edge of pavement and riprap swale. Area shall be re-seeded.
- Bare area near +/- sta. 26+50 LT behind sidewalk. Area shall be re-seeded to establish vegetation.
- Bare area near +/- sta. 27+75 LT at the transformer. Cable and conduit debris also in the area. Cable and conduit shall be removed and area re-seeded to establish vegetation.
- Vegetation is sparse from +/- sta. 28+50 and 30+50 RT between the edge of pavement and riprap swale. Area shall be re-seeded to establish vegetation.
- CB35 – Approximately 1-2” of sediment in sump. Brick collar appears to be in good condition.
- CB36 – <1” of sediment in sump.
- CB37 – <1” of sediment in sump.
- CB38 – Approximately 1-2” of sediment in sump.
- See photos 9 – 11.
- All CBs with 2” or more of sediment in the sump shall be cleaned out.

#### Visitors on Site

- None observed.

#### Concerns or Questions

- None at this time.

#### Action Items

- K

Prepared By: Benjamin Grondin, EI

Reviewed By: Will Haskell, PE

If there are any discrepancies, please notify the sender immediately.



Photo 1 – CB34 outlet with leaves and sediment obstructing outlet flow.



Photo 2 – CB33 outlet with vegetation overgrowing and obstructing the outlet flow.





Photo 3 – +/- sta. 11+50 to +/- sta. 12+50 with sparse vegetation near fence line.



Photo 4 – Area of sparse vegetation near +/- sta. 23+75 RT.





Photo 5 – Area of sparse vegetation at edge of pavement near +/- 21+00 RT.

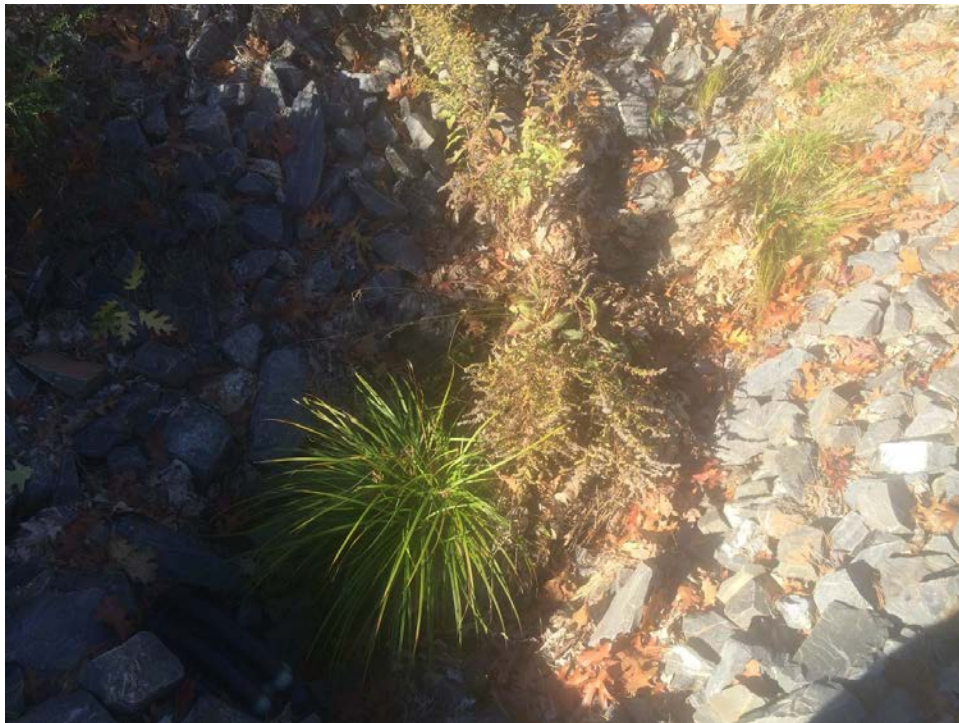


Photo 6 – Vegetation and sediment obstructing culvert inlet near +/- sta. 22+40 LT.





Photo 7 – Bare area near sidewalk at +/- sta. 22+40 LT.



Photo 8 – Trash/debris in riprap apron near +/- sta. 59+00 LT.





Photo 9 – Sparse vegetation from +/- sta. 26+50 to +/- 27+50.



Photo 10 – Cable and conduit debris near transformer at +/- sta. 27+75 LT.



Photo 11 – Sparse vegetation near +/- sta. 30+50 between edge of pavement and riprap swale.