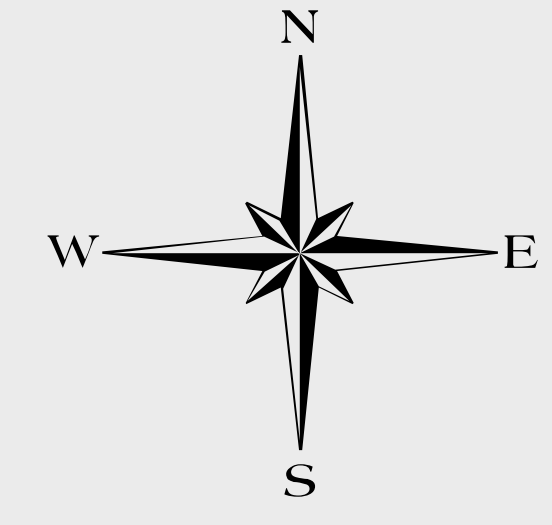


Town of Windham LD 2003 Land Use Map Amendment

Raymond

Gray



Sebago Lake

Standish

Cumberland



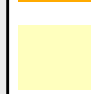


Gorham

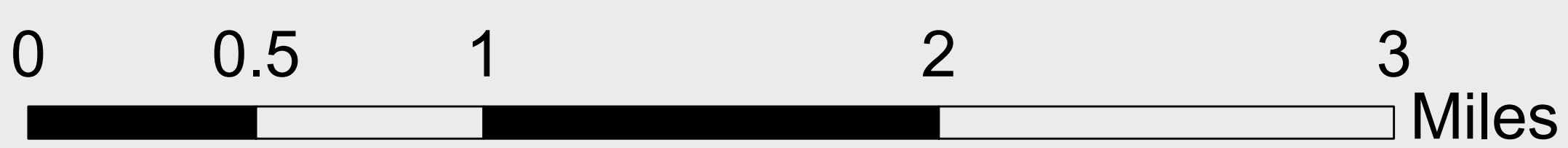
Falmouth

Westbrook

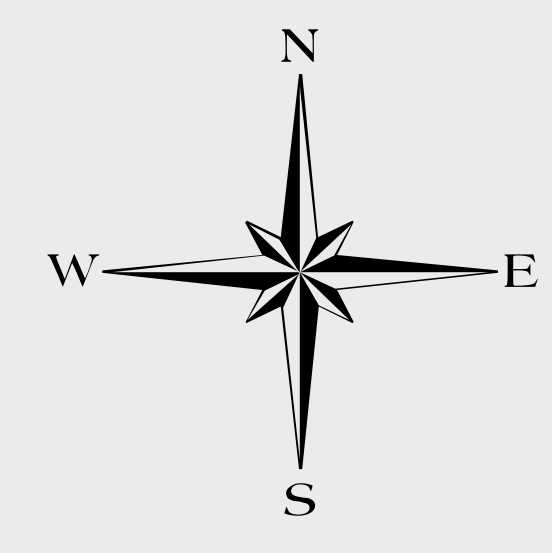
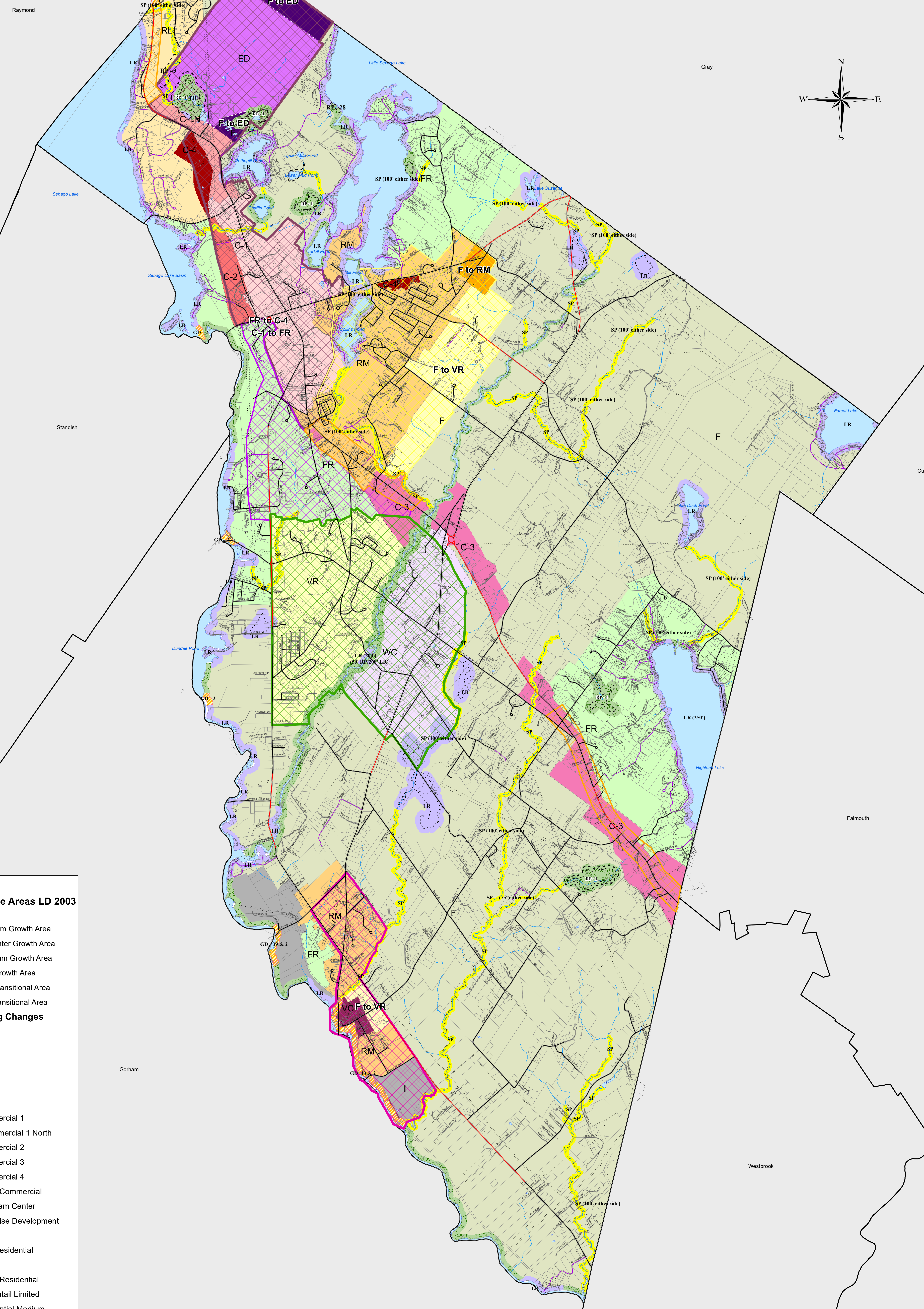
Portland

Legend
Proposed Zoning Changes

	C-1 to FR
	F to ED
	F to RM
	F to VR
	FR to C-1



Town of Windham LD 2003 Land Use Map Amendment



Legend

Future Land Use Areas LD 2003

Proposed

- North Windham Growth Area
- Windham Center Growth Area
- South Windham Growth Area
- Residential Growth Area
- Residential Transitional Area
- Route 302 Transitional Area

Proposed Zoning Changes

- C-1 to FR
- F to ED
- F to RM
- F to VR
- FR to C-1

Zoning Districts

- C-1 = Commercial 1
- C-1N = Commercial 1 North
- C-2 = Commercial 2
- C-3 = Commercial 3
- C-4 = Commercial 4
- VC = Village Commercial
- WC = Windham Center
- ED = Enterprise Development
- F = Farm
- FR = Farm Residential
- I = Industrial
- VR = Village Residential
- RL = Residential Limited
- RM = Residential Medium

