

**TOWN OF WINDHAM  
WATERSHED PROTECTION FUND  
2019 Final Report  
Collins Pond Improvement Association**

**Applicant Contact Information:**

Applicant Name: Collins Pond Improvement Association (CPIA)

Contact Person: Rodger Patterson

Address 92 Emerson Drive

City: Windham State: Maine Zip Code: 04062

Phone 207-892-7308 Fax none

E-mail rodgerpatt@aol.com

**Project Detail:**

Since 2007 the Collins Pond Improvement Association has been working to reduce the infestation of invasive milfoil in Collins Pond. The goal is to eradicate this plant from the lake. We continue trying to get it under control to the point where our efforts can be reduced to the annual removal of a small amount of remaining plants. The use of small benthic mats continues in scattered areas where lake front owners have chosen to reduce the amount of plants in swimming areas. The most productive method to mitigate this invasive plant continues to be the Diver Assisted Suction Harvester (DASH) boats. A diver weeds the plants from the bottom of the lake, trying to get the entire root ball removed, and feeds this into a large suction hose. The hose pulls the plants up onto the boat where they are deposited into onion bags. We employ only volunteer crews and divers on the Collins Pond Improvement Association (CPIA) DASH boat.

Starting in 2014 we additionally hired a local company which has greatly increased the volume of plants we are able to remove. The private contractor continues to be New England Milfoil from Brownfield Maine due to our previous experience with this company. Their prices also continue to be very competitive. The New England Milfoil DASH boat uses a slightly different collection technique to loosely collect the plants which are then transferred to a dump trailer. One of the New England Milfoil crew composts the plants on his farm property.

The Maine DEP Plant Control grant program provides most of the funding to support our efforts. Collins Pond Improvement Association's 503(c)3 status has helped up to attract tax deductible contributions. The recent tax law changes may have slowed some donations down but we continue to seek out donations and grants. In addition to the Windham Watershed Protection grant, for the second year in a row we received a donation from the Evergreen Federal Credit Union. This was a result of a fundraising raffle to support several local lake associations, Portland Trails and local food pantries.

**TOWN OF WINDHAM  
WATERSHED PROTECTION FUND  
2019 Final Report  
Collins Pond Improvement Association**

**Collins Pond Projected and Actual Budgets 2019**

<b>Budget Item</b>	<b>Projected Expense</b>	<b>Actual Expenses 2019</b>
Boat/Trailer Registration	\$107.60	\$64.60
Marine/D&O Liability Insurance	\$2,540.00	\$2,520.00
Dump Trailer Rental	\$1,950.00	\$0.00
New England Milfoil-6 weeks work	\$33,600.00	\$18,895.00 3 weeks work
DASH Expenses-gas, oil, rope, floats	\$520.00	\$675.00
Dive gear replacements	\$100.00	\$0.00
Pump/Motor repair	\$400.00	\$0.00
Winterize motor	\$110.00	\$85.00
Onion bags	\$200.00	\$100.00
<b>Total</b>	<b>\$39,527.60</b>	<b>\$22,339.60</b>

**Collins Pond Milfoil Project Sources of Income 2019**

	<b>Projected</b>	<b>Actual</b>
<b>Windham Watershed Protection Grant</b>	<b>\$4,000.00</b>	<b>\$2,500.00</b>
Evergreen Federal Credit Union	\$0.00	\$500.00
Maine DEP Plant Control Grant	\$31,622.08	\$17,869.00
Cash Match-Collins Pond Improvement Association	\$3,905.52	\$1,470.60
	<b>\$39,527.60</b>	<b>\$22,339.60</b>

**Accomplishments for the 2019 season:**

The New England Milfoil worked in the north end of the lake again this year. The first two Google maps show the areas they worked for two weeks in July and one week in September. The final Google map shows the area that our volunteer crew worked south of the small island.

The north end of the lake is very shallow and has always had the densest growth of milfoil. Over the last six years we have been able to knock this back to where there is now still dense milfoil widely separated by areas of natural grasses. It is showing slow improvement.

We continued the use of small, 10' x 10' mats that owners can deploy from their shorelines. Surveys performed several times this summer showed many areas of dense and very tall milfoil plants growing in widely separate areas of the lake. We also see large areas of natural grasses growing, some in areas we previously worked with the DASH boat. This is encouraging but we still have a lot of milfoil growing in the lake.

**TOWN OF WINDHAM  
WATERSHED PROTECTION FUND  
2019 Final Report  
Collins Pond Improvement Association**

The total number of gallons of milfoil plants removed this year was **21,160** which is a 40% increase over the previous year. Since 2007 we have removed **105,626** gallons of milfoil from Collins Pond.

As previously stated, if this infestation of invasive milfoil is allowed to continue to get out of control it will eventually affect the property values and tax revenue for this area. Additionally the plants will likely continue to wash downstream to the Pleasant and Presumpscot rivers becoming an environmental and financial problem for the Town.

We continue to participate in the Maine Milfoil Summit held annually at the University of Maine Lewiston/Auburn campus where many organizations share ideas and accomplishments. Additionally we participate in discussions organized by Lakes Environmental Association in Bridgton around invasive plant control. Little Sebago Lake Association continues to assist us in obtaining our onion bags at a group buying price and with DASH boat problem solving.

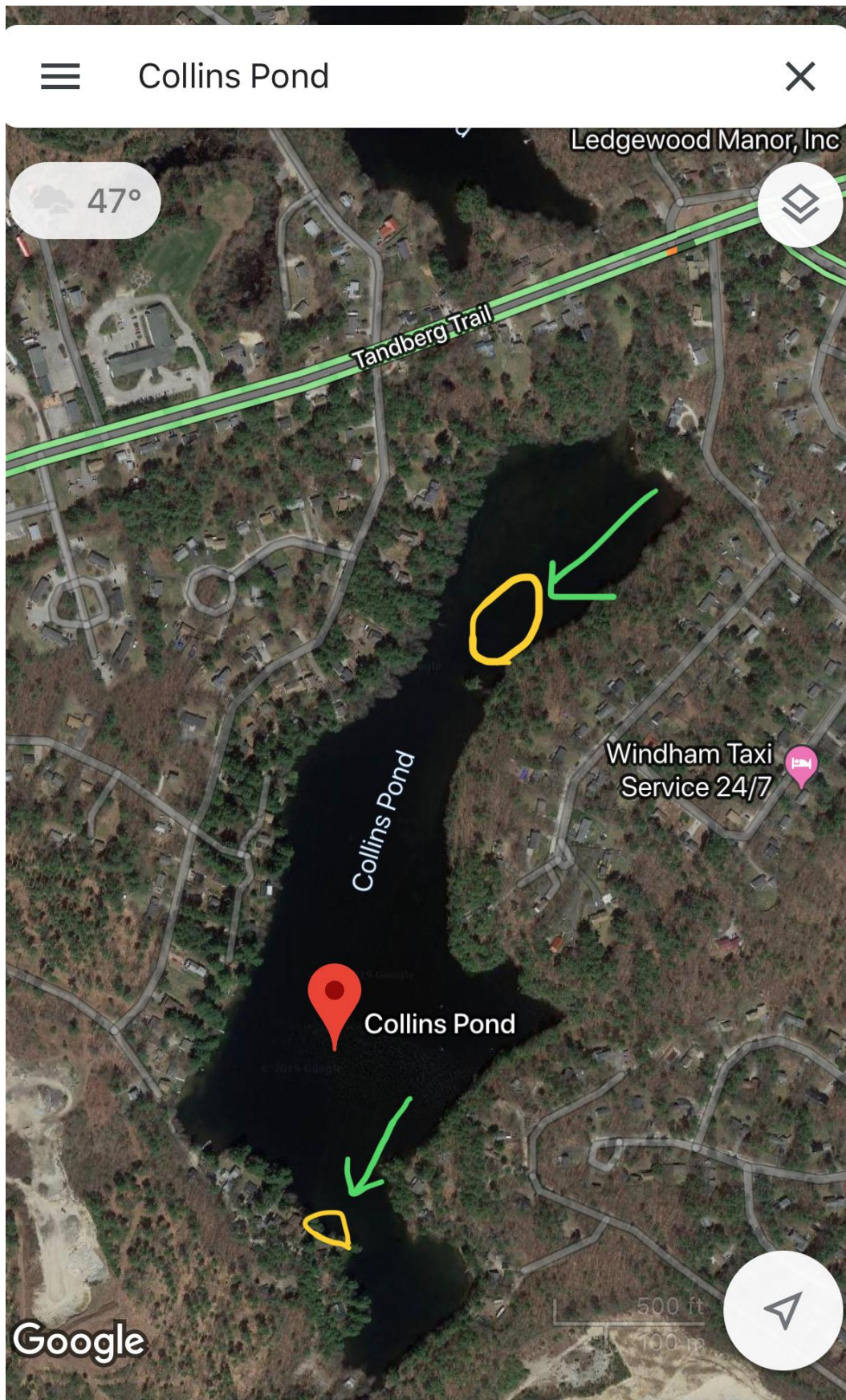
Collins Pond Improvement Association owns and maintains a DASH boat. This is a 1990 24' pontoon boat with a 50 hp outboard motor. The original boat seats were removed and a trough installed along with a 23 hp pump/compressor. The pump generates surface supplied air to the diver and also creates the suction to draw water through a 100' long, 4" hose. The diver pulls up the milfoil plants by their root balls and feeds them into the hose where they are drawn up onto the boat. The plants and water land in the trough and drain out through four outlets into mesh onion bags. The water returns to the lake through drain holes and the plants are bagged and eventually sent for composting. So far this is the only effective method of controlling invasive plants besides the use of herbicides, which are rarely approved for use in Maine.

**TOWN OF WINDHAM  
WATERSHED PROTECTION FUND  
2019 Final Report  
Collins Pond Improvement Association**



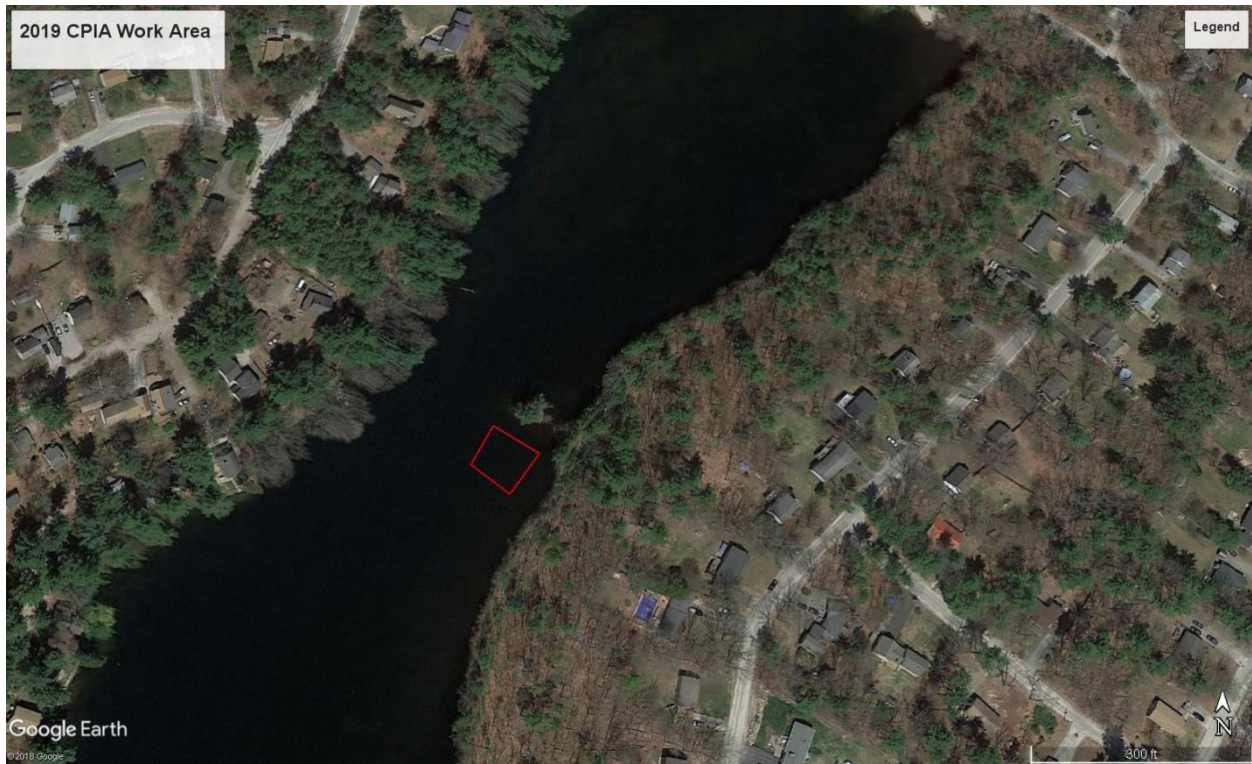


**TOWN OF WINDHAM  
WATERSHED PROTECTION FUND  
2019 Final Report  
Collins Pond Improvement Association**





**TOWN OF WINDHAM  
WATERSHED PROTECTION FUND  
2019 Final Report  
Collins Pond Improvement Association**



**CPIA DASH Boat-1990 Sea Nymph 50hp outboard 23hp pump/compressor**

