

## PROJECT NOTIFICATION: Structure Replacement Program

Spring/Summer 2026

Dear Neighbor:

We are investing in transmission line upgrades to continue providing our customers with safe, reliable service and to strengthen Maine's energy grid. This is especially important as our state experiences stronger, more frequent storms.

### Project Scope

We are undertaking a multi-year effort to upgrade wooden transmission structures with stronger steel poles engineered to improve grid reliability.

### Construction

We will soon be working near your property to replace one or more transmission line structures. Our construction crews will be operating within CMP easements or areas where access rights have been given by landowners. Should we need additional access to complete these upgrades, we will ask for permission.

Safety is always our top priority, and we aim to carry out this work in a way that minimizes disruptions to your daily routines and to the surrounding environment as required by our permits.

### For More Information

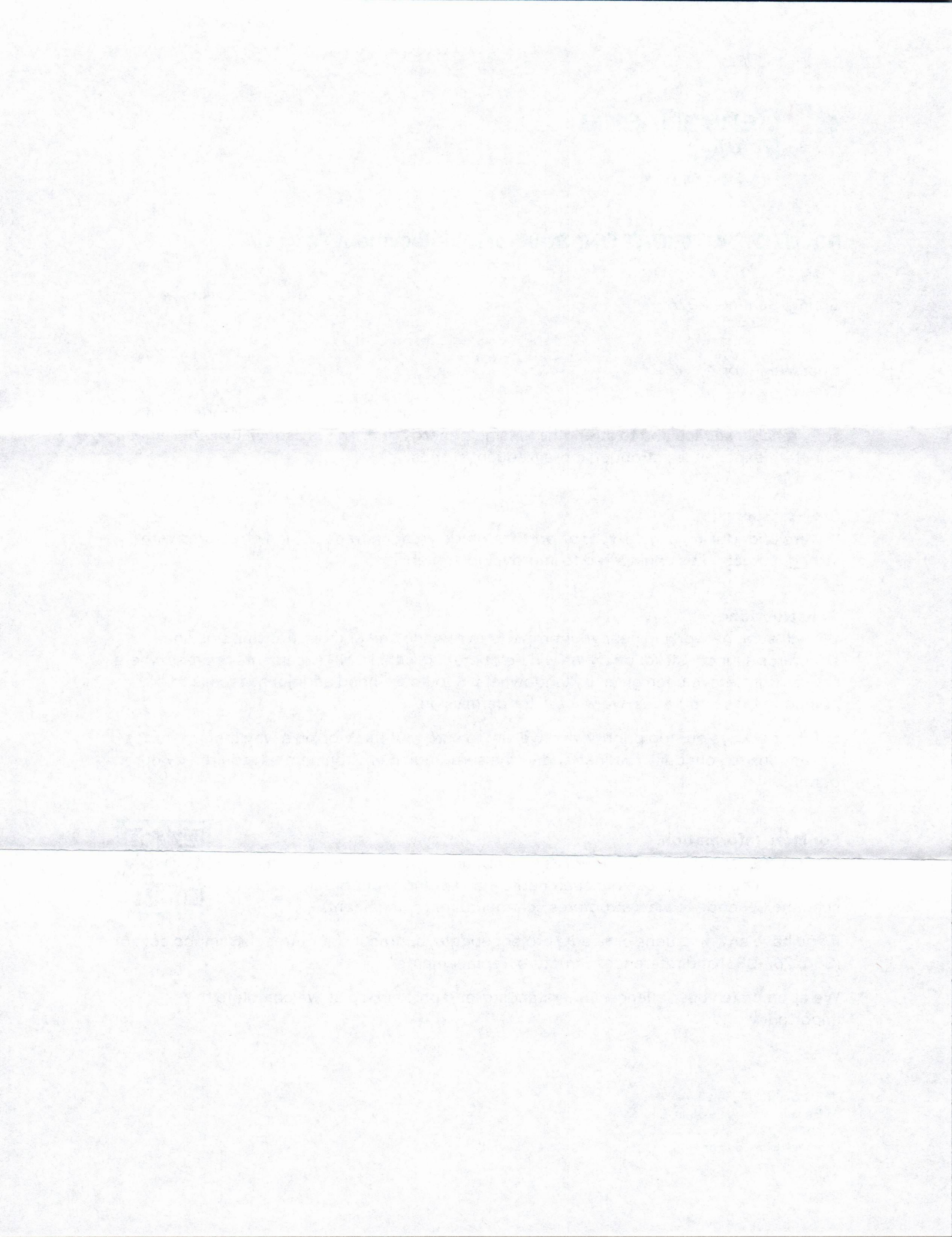
Enclosed is a fact sheet with more details about the Structure Replacement Program. You can also use our searchable map at [cmp-srpupgrades.com](http://cmp-srpupgrades.com) or scan the QR code to view structures scheduled for replacement.



If you have any questions or need a project update, contact us at [outreach@cmpco.com](mailto:outreach@cmpco.com) or (888) 267-0831 and reference "Structure Replacements."

We appreciate your patience, understanding, and partnership as we complete this important work.

CMP Community Relations  
83 Edison Drive, Augusta, ME 04336  
(888) 267-0831 [www.cmpco.com](http://www.cmpco.com)  
[Outreach@cmpco.com](mailto:Outreach@cmpco.com)



## Structure Replacement Program

Construction: May 2026 through 2027

### Program Overview

We are investing in transmission line upgrades to continue providing our customers safe, reliable service and strengthen Maine's energy grid. This is especially important as our state experiences stronger, more frequent storms.

Transmission lines, along with substations, are the backbone of our grid serving large numbers of customers. We regularly inspect our lines to ensure each component is performing according to standards.

### Program Scope

We are undertaking a two-year program to upgrade wooden structures with new, stronger steel poles that have longer lifespans and can better withstand extreme storms. The poles are engineered to modern specifications that improve grid reliability.

The new steel poles will be taller than the wooden ones. Once the new poles are in place, the older wooden poles will be removed. We expect no outages as a result of this work.

### Program Locations

Please visit [cmp-srpupgrades.com](http://cmp-srpupgrades.com) or simply scan the QR code to view an interactive map of where structures will be replaced.



### Access

Our construction crews will be accessing our transmission line corridor via roads where CMP has access rights or legal agreements with property owners or towns. Should we need additional access to complete these upgrades, we will ask for permission.

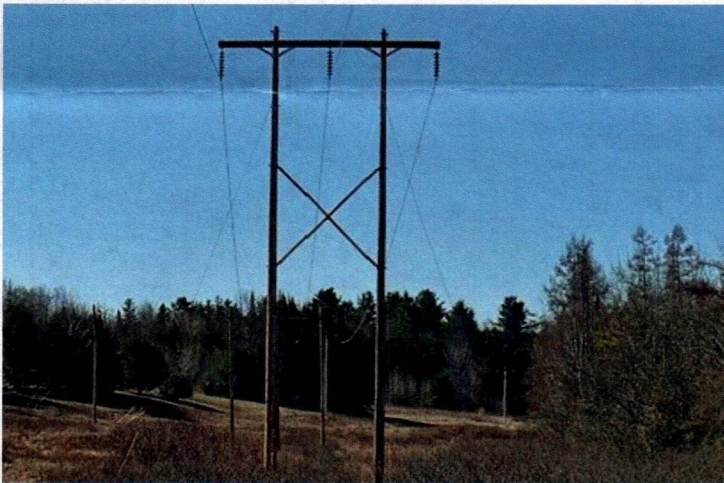
### Benefits to Customers

- Improved reliability to meet customers' electricity needs.
- New, stronger steel structures.

### Estimated Timetable: 2026-2027

- Construction Start: May 2026
- Completion: End of 2027

### Existing 115kV structure



### Existing 345kV structure



*CMP will be replacing about 125 wooden 115kV (left) and 250 345kV (right) structures in 2026-2027,*

### FOR MORE INFORMATION

#### Project Information Line:

1.888.267.0831. Refer to Structure Replacements

**Email:** [outreach@cmpco.com](mailto:outreach@cmpco.com)

**Website:** [www.cmp-srpupgrades.com](http://www.cmp-srpupgrades.com)

## Permits

We will secure all necessary permits for this project, if needed, from the Maine Department of Transportation, Maine Department of Environmental Protection, U.S. Army Corps of Engineers, municipalities, and railroads.

## Matting

Timber ground mats will be used, especially in environmentally sensitive areas, to safely disperse the weight of construction vehicles and preserve the land below them.

## Trees and Vegetation

Trees and vegetation will be trimmed as needed along the transmission line.

## Environmentally Sensitive Areas

Our environmental specialists will visit sites along the transmission line that are scheduled for upgrades to mark property boundaries and identify environmentally sensitive areas.

## Safety

Safety is always our top priority. Transmission lines will be active construction zones during this project and should be avoided. Flaggers will be present roadside when necessary to notify pedestrians and motorists of work zones.

## Work Hours and Noise

All construction will occur in accordance with town ordinances. Construction noise from the use of heavy equipment may be heard while we are upgrading in your area.

## Project Locations

Please visit [cmp-srpupgrades.com](http://cmp-srpupgrades.com) or use the QR code to view an interactive map of where structures will be replaced. You can search by your address to find sites near you. Locations are subject to change.

