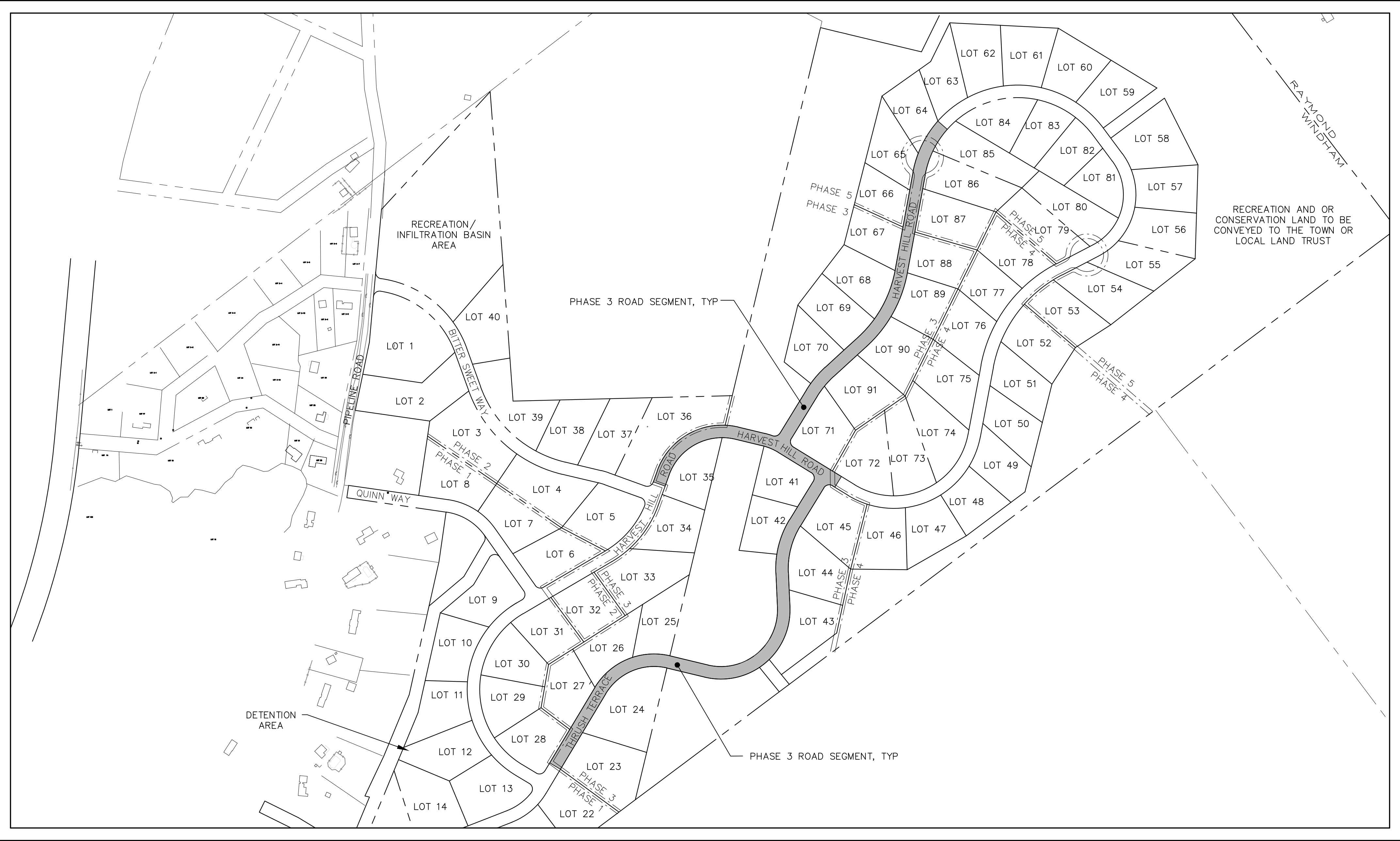


SEBAGO HEIGHTS SUBDIVISION PHASE 3 AS-BUILT PLANS

HARVEST HILL ROAD
WINDHAM, MAINE
NOVEMBER 17, 2015



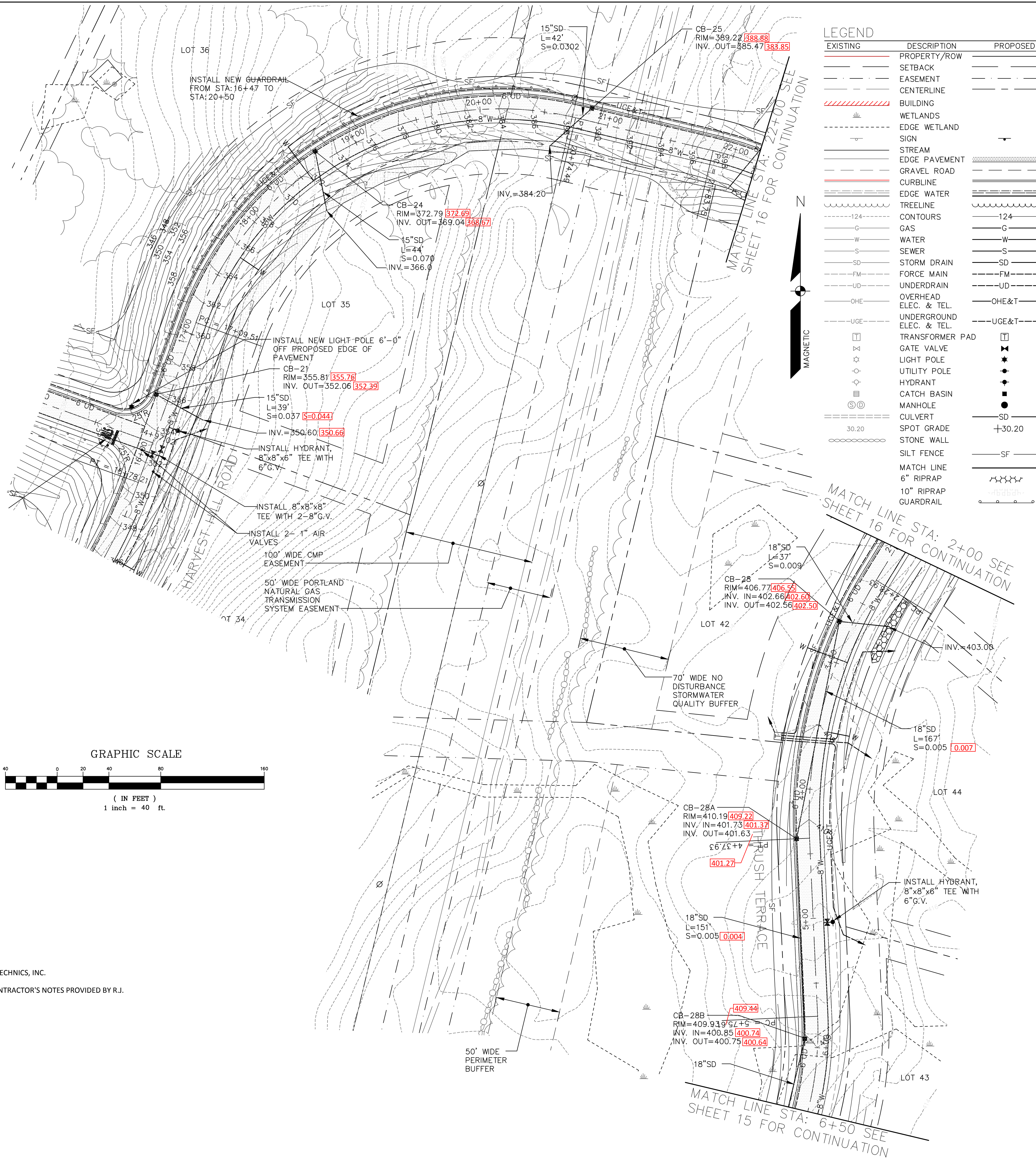
AS-BUILT DRAWING SHEET INDEX

PAGE NO.	DESCRIPTION
1	TITLE SHEET
2	AS-BUILT PLAN HARVEST HILL ROAD & THRUSH TERRACE
3	AS-BUILT PLAN THRUSH TERRACE
4	AS-BUILT PLAN HARVEST HILL ROAD & THRUSH TERRACE
5	AS-BUILT PLAN HARVEST HILL ROAD
6	AS-BUILT PLAN MONUMENTATION

INDEX MAP

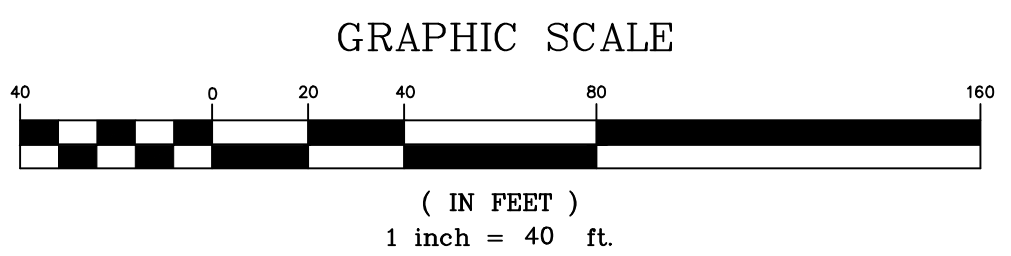
PREPARED BY:
DM ROMA
CONSULTING ENGINEERS
59 HARVEST HILL RD
WINDHAM, ME 04062
(207) 310-0506

PREPARED FOR:
SEBAGO HEIGHTS, LLC
97A EXCHANGE STREET
PORTLAND, ME 04101

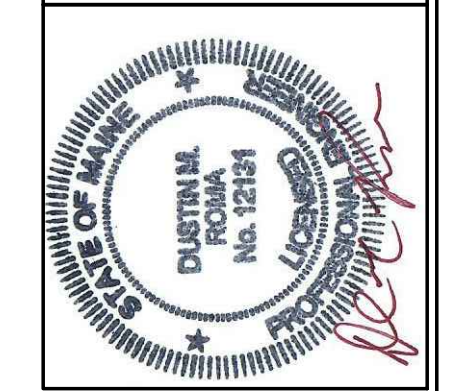


LEGEND

EXISTING	DESCRIPTION	PROPOSED
---	PROPERTY/ROW	---
---	SETBACK	---
---	EASEMENT	---
---	CENTERLINE	---
---	BUILDING	---
---	WETLANDS	---
---	EDGE WETLAND	---
---	SIGN	---
---	STREAM	---
---	EDGE PAVEMENT	---
---	GRAVEL ROAD	---
---	CURBLINE	---
---	EDGE WATER	---
---	TREELINE	---
---	CONTOURS	124
---	GAS	G
---	WATER	W
---	SEWER	S
---	STORM DRAIN	SD
---	FORCE MAIN	FM
---	UNDERDRAIN	UD
---	OVERHEAD ELEC. & TEL.	OHE&T
---	UNDERGROUND ELEC. & TEL.	UGE&T
---	TRANSFORMER PAD	---
---	GATE VALVE	---
---	LIGHT POLE	---
---	UTILITY POLE	---
---	HYDRANT	---
---	CATCH BASIN	---
---	MANHOLE	---
---	CULVERT	SD
---	SPOT GRADE	+30.20
---	STONE WALL	---
---	SILT FENCE	SF
---	MATCH LINE	---
---	6" RIPRAP	---
---	10" RIPRAP	---
---	GUARDRAIL	---



- AS-BUILT PLAN NOTES:**
1. BASE PLAN INFORMATION FROM PLANS PREPARED BY SEBAGO TECHNICS, INC.
 2. AS-BUILT INFORMATION SHOWN HEREON BASED SOLELY ON CONTRACTOR'S NOTES PROVIDED BY R.J. GRONDIN & SONS.



DM ROMA
CONSULTING ENGINEERS
59 HARVEST HILL RD
WINDHAM, ME 04092
(207) 310-0500

REV	DATE	BY	DESCRIPTION
A	11-4-15	DMR	SUBMITTED TO TOWN
B	11-17-15	DMR	REVISED PER TOWN REVIEW

AS-BUILT PLAN
SEBAGO HEIGHTS SUBDIVISION - PHASE 3
WINDHAM, MAINE
FOR RECORD OWNER:
SEBAGO HEIGHTS, LLC
99A EXCHANGE STREET
PORTLAND, ME 04101

1" = 40'
SCALE:
11-17-2015
DATE:
SHEET 2 OF 6
AB-2

LEGEND

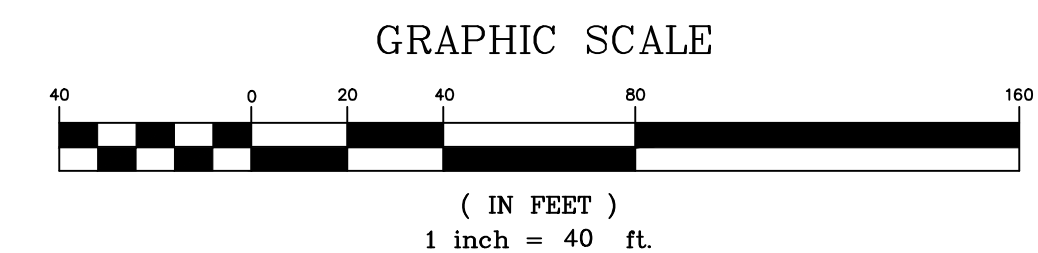
EXISTING	DESCRIPTION	PROPOSED
---	PROPERTY/ROW	---
---	SETBACK	---
---	EASEMENT	---
---	CENTERLINE	---
	BUILDING	---
	WETLANDS	---
---	EDGE WETLAND	---
---	SIGN	---
---	STREAM	---
---	EDGE PAVEMENT	---
---	GRAVEL ROAD	---
---	CURBLINE	---
---	EDGE WATER	---
---	TREELINE	---
---	CONTOURS 124	124
---	GAS	G
---	WATER	W
---	SEWER	S
---	STORM DRAIN	SD
---	FORCE MAIN	FM
---	UNDERDRAIN	UD
---	OVERHEAD ELEC. & TEL.	OHE&T
---	UNDERGROUND ELEC. & TEL.	UGE&T
□	TRANSFORMER PAD	□
□	GATE VALVE	□
☆	LIGHT POLE	☆
○	UTILITY POLE	○
○	HYDRANT	○
□	CATCH BASIN	□
○	MANHOLE	○
---	CULVERT	SD
---	SPOT GRADE 30.20	+30.20
---	STONE WALL	---
---	SILT FENCE	SF
---	MATCH LINE	---
---	6" RIPRAP	---
---	10" RIPRAP	---
---	GUARDRAIL	---



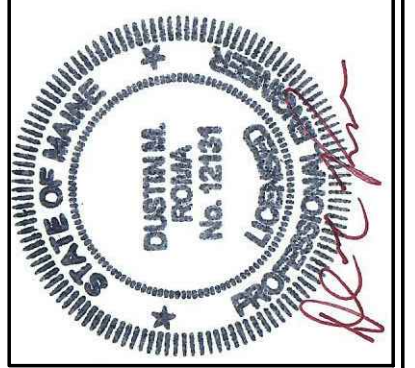
MATCH LINE STA: 6+50 SEE SHEET 14 FOR CONTINUATION

MATCH LINE STA: 18+00 SEE SHEET 12 FOR CONTINUATION

50' WIDE PORTLAND NATURAL GAS TRANSMISSION SYSTEM EASEMENT



- AS-BUILT PLAN NOTES:**
1. BASE PLAN INFORMATION FROM PLANS PREPARED BY SEBAGO TECHNICS, INC.
 2. AS-BUILT INFORMATION SHOWN HEREON BASED SOLELY ON CONTRACTOR'S NOTES PROVIDED BY R.J. GRONDIS & SONS.

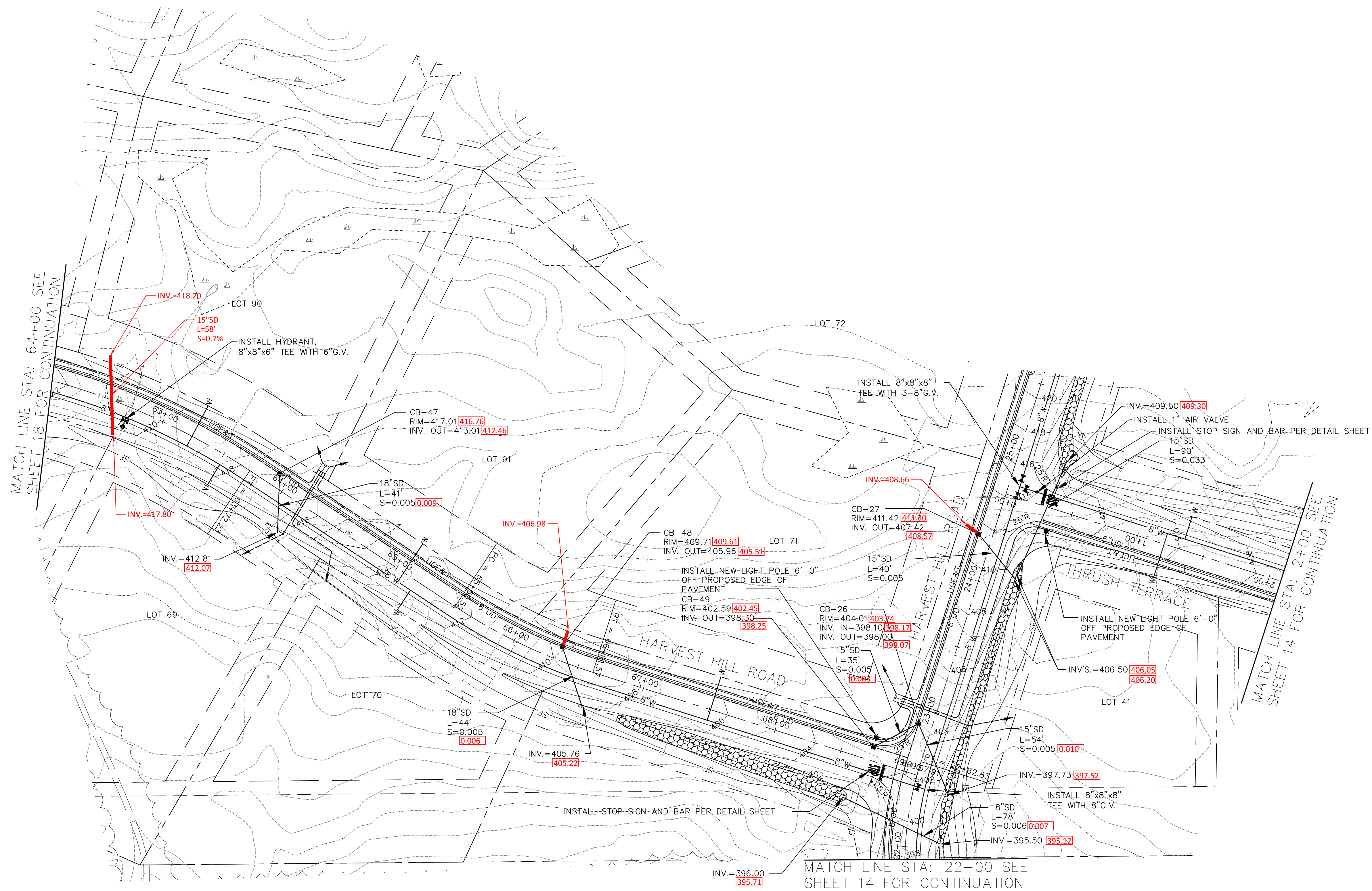


DM ROMA
CONSULTING ENGINEERS
59 HARVEST HILL RD
WINDHAM, ME 04092
(207) 310-0506

REV	DATE	BY	DESCRIPTION
A	11-4-15	DMR	SUBMITTED TO TOWN
B	11-17-15	DMR	REVISED PER TOWN REVIEW

AS-BUILT PLAN
SEBAGO HEIGHTS SUBDIVISION - PHASE 3
WINDHAM, MAINE
FOR RECORD OWNER:
SEBAGO HEIGHTS, LLC
99A EXCHANGE STREET
PORTLAND, ME 04103

1" = 40'
SCALE:
11-17-2015
DATE:
SHEET 3 OF 6
AB-3

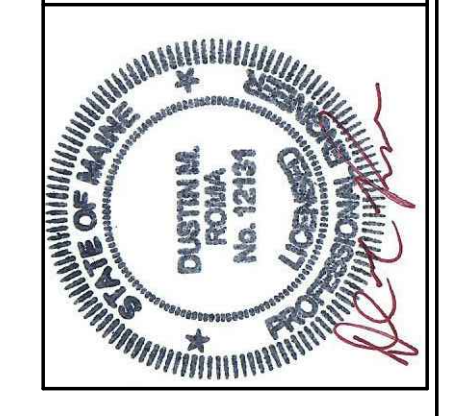
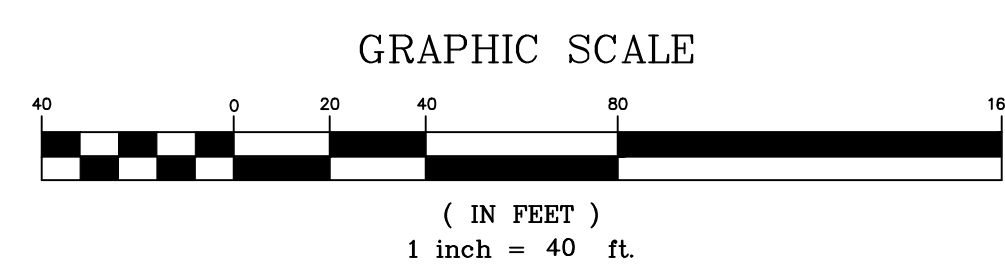


MATCH LINE STA: 64+00 SEE SHEET 18 FOR CONTINUATION

MATCH LINE STA: 2+00 SEE SHEET 14 FOR CONTINUATION

AS-BUILT PLAN NOTES:

1. BASE PLAN INFORMATION FROM PLANS PREPARED BY SEBAGO TECHNICS, INC.
2. AS-BUILT INFORMATION SHOWN HEREON BASED SOLELY ON CONTRACTOR'S NOTES PROVIDED BY R.J. GRONDIN & SONS.



DM ROMA
CONSULTING ENGINEERS
59 HARVEST HILL RD
WINDHAM, ME 04092
(207) 310-0506

REV	DATE	BY	DESCRIPTION
A	11-14-15	DMR	SUBMITTED TO TOWN
B	11-17-15	DMR	REVISED PER TOWN REVIEW

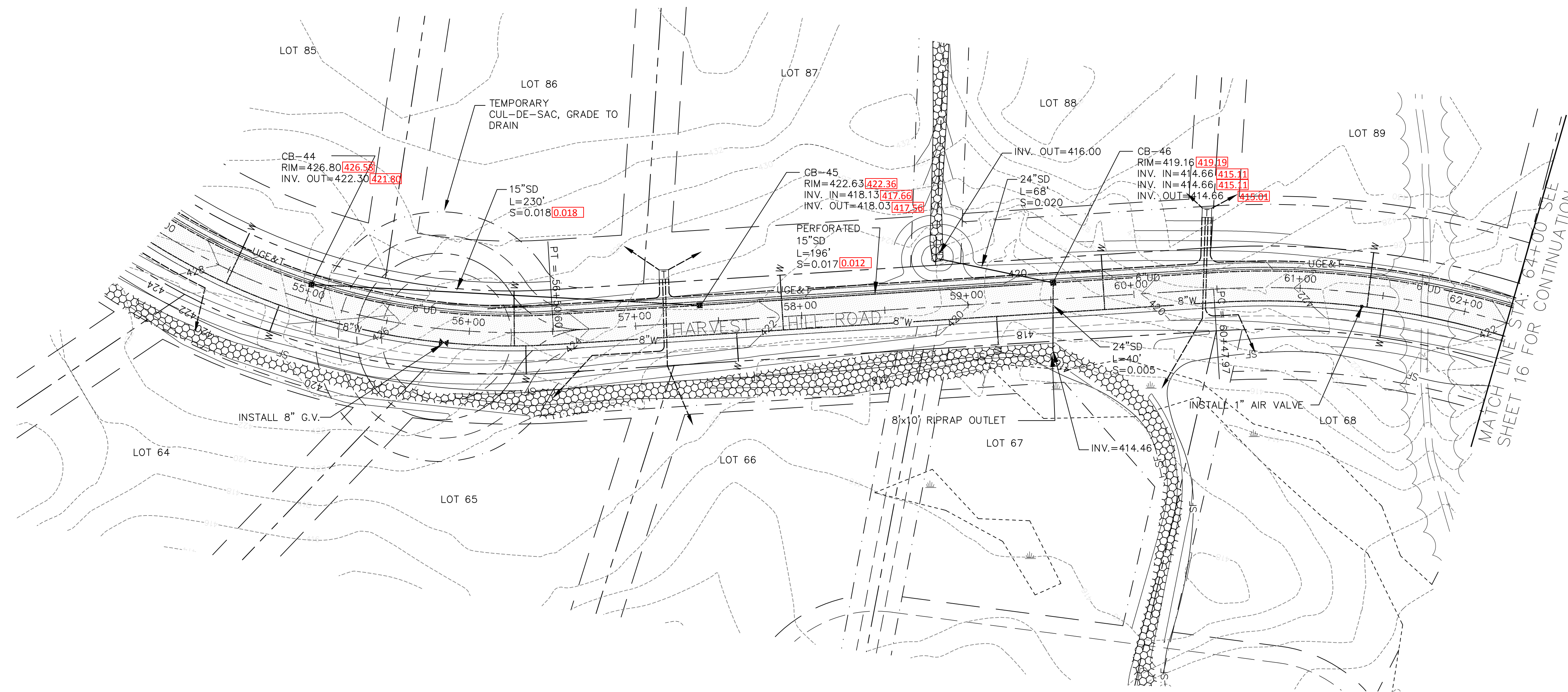
AS-BUILT PLAN
SEBAGO HEIGHTS SUBDIVISION - PHASE 3
WINDHAM, MAINE
FOR RECORD OWNER:
SEBAGO HEIGHTS, LLC
99A EXCHANGE STREET
PORTLAND, ME 04101

1" = 40'
SCALE:

11-17-2015
DATE:

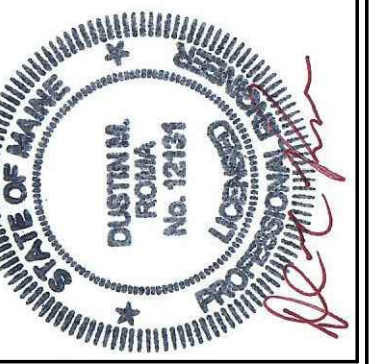
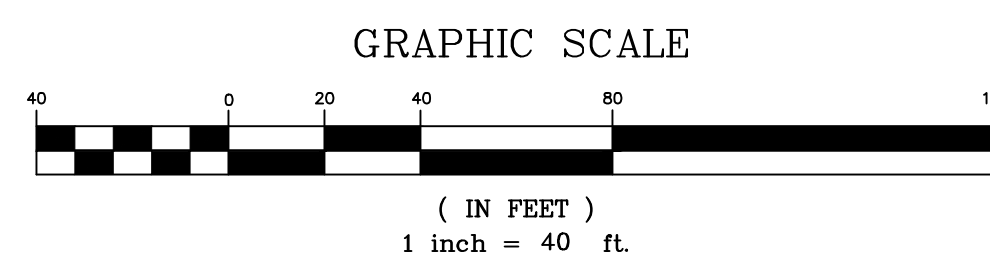
SHEET 4 OF 6

AB-4



AS-BUILT PLAN NOTES:

1. BASE PLAN INFORMATION FROM PLANS PREPARED BY SEBAGO TECHNICS, INC.
2. AS-BUILT INFORMATION SHOWN HEREON BASED SOLELY ON CONTRACTOR'S NOTES PROVIDED BY R.J. GRONDIN & SONS.



DM ROMA
CONSULTING ENGINEERS

59 HARVEST HILL RD
WINDHAM, ME 04092
(207) 310-0506

REV	DATE	BY	DESCRIPTION
A	11-4-15	DMR	SUBMITTED TO TOWN
B	11-17-15	DMR	REVISED PER TOWN REVIEW

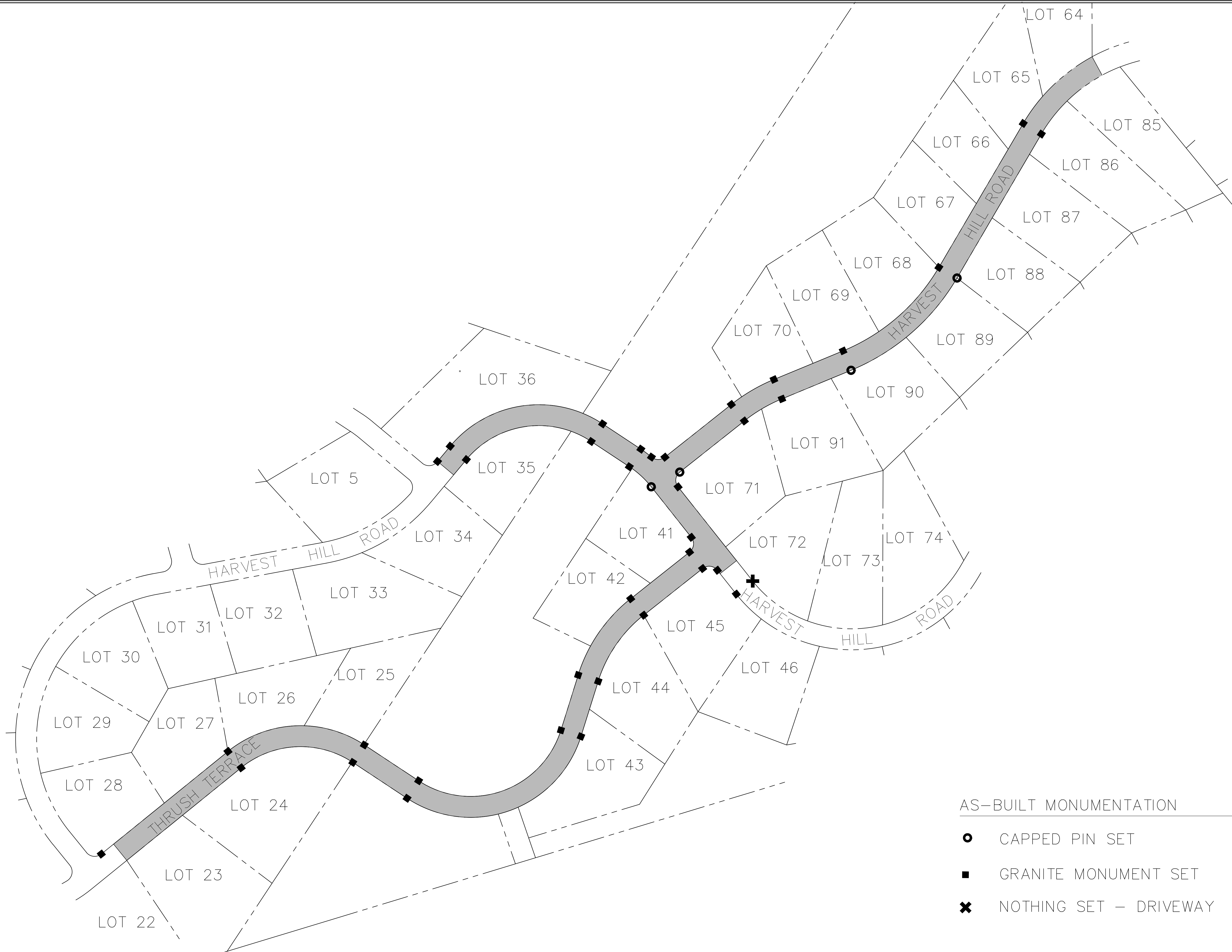
AS-BUILT PLAN
SEBAGO HEIGHTS SUBDIVISION - PHASE 3
WINDHAM, MAINE
FOR RECORD OWNER:
SEBAGO HEIGHTS, LLC
99A EXCHANGE STREET
PORTLAND, ME 04101

1" = 40'
SCALE:

11-17-2015
DATE:

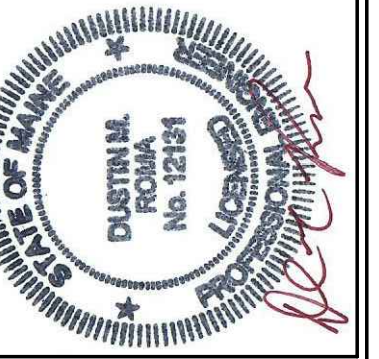
SHEET 5 OF 6

AB-5



AS-BUILT MONUMENTATION

- CAPPED PIN SET
- GRANITE MONUMENT SET
- ✕ NOTHING SET – DRIVEWAY



DM ROMA
CONSULTING ENGINEERS
59 HARVEST HILL RD
WINDHAM, ME 04092
(207) 310-0500

REV	DATE	BY	DESCRIPTION
B	11-17-15	DMR	REVISED PER TOWN REVIEW

AS-BUILT PLAN
SEBAGO HEIGHTS SUBDIVISION - PHASE 3
WINDHAM, MAINE
FOR RECORD OWNER:
SEBAGO HEIGHTS, LLC
99A EXCHANGE STREET
PORTLAND, ME 04101

1" = 100'
SCALE:
11-17-2015
DATE:
SHEET 6 OF 6
AB-6