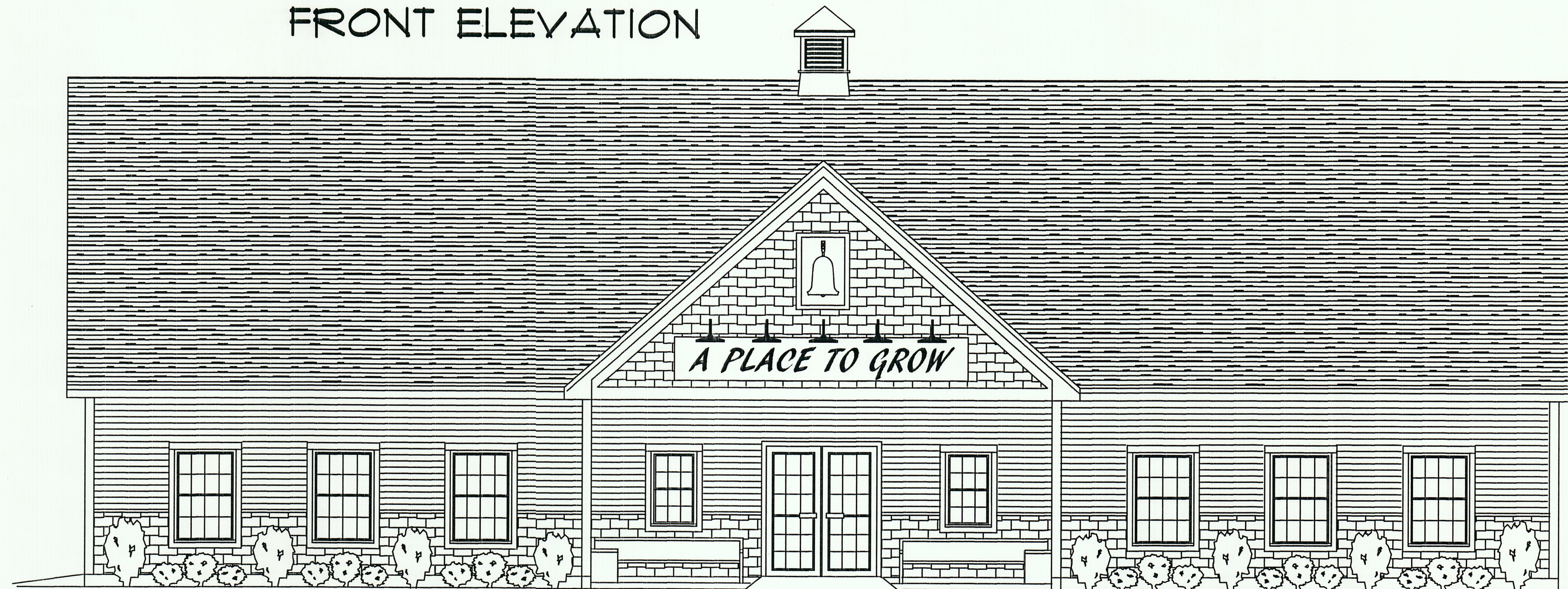
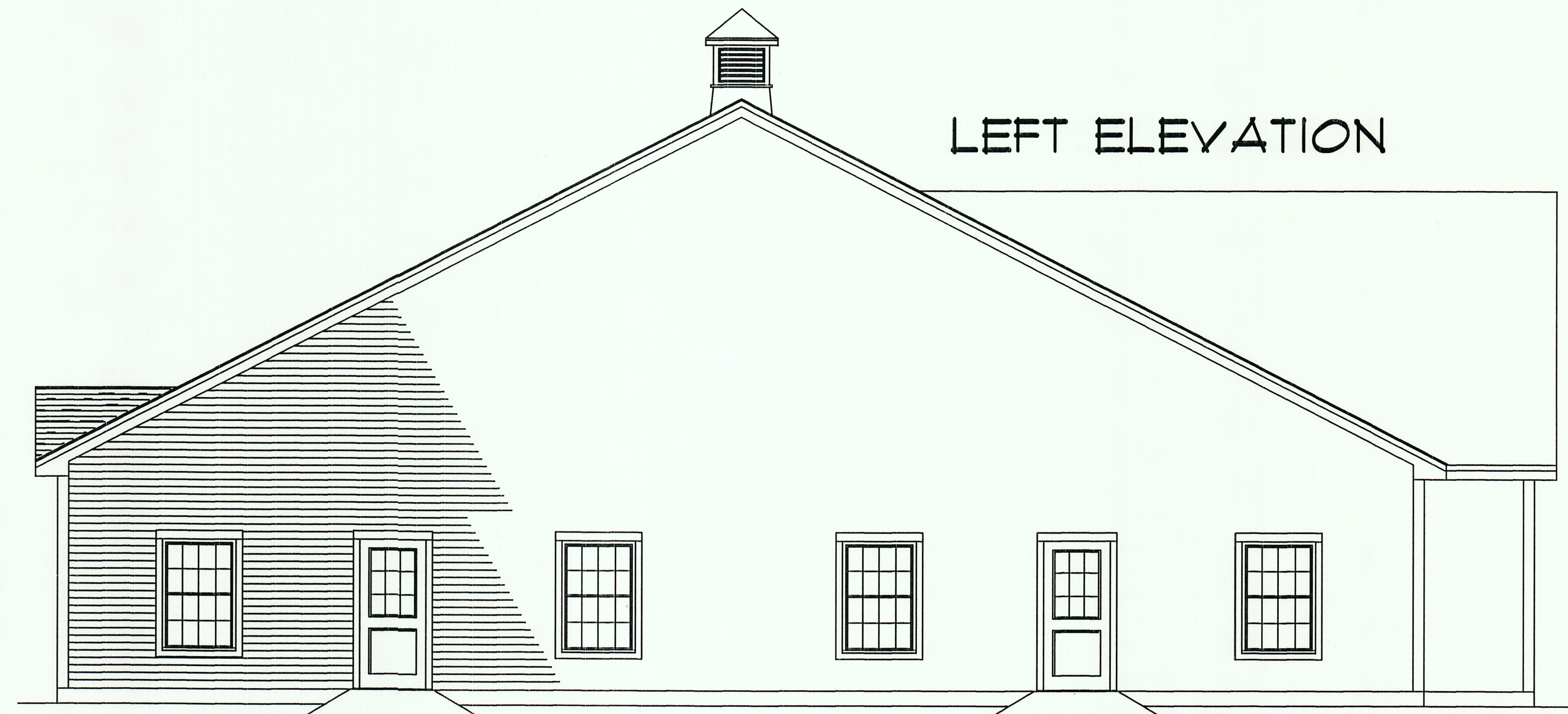


FRONT ELEVATION



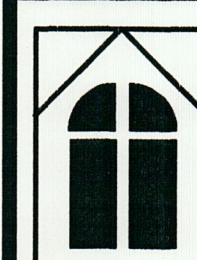
THESE DRAWINGS FOR BID OR APPRAISAL PURPOSES ONLY - NOT FOR CONSTRUCTION OR PERMITS

LEFT ELEVATION



© J.CALL DESIGN

THESE DRAWINGS ARE TO BE USED FOR BIDS OR APPRAISAL ONLY.
THEY ARE NOT TO BE USED FOR PERMITS. USE OR REPRODUCTION OF THESE
DRAWINGS FOR CONSTRUCTION VIOLATES FEDERAL COPYRIGHT LAWS.



J. CALL DESIGN

PLANNING AND DESIGN SERVICES FOR
RESIDENTIAL AND COMMERCIAL
151 ROOSEVELT TRAIL, WINDHAM, ME. 207-892-2810

SCALE

1/4" = 1'

12/2016

DATE

DRAWN BY

J. CALL

1 OF 5

PAGE

BID PLANS ONLY

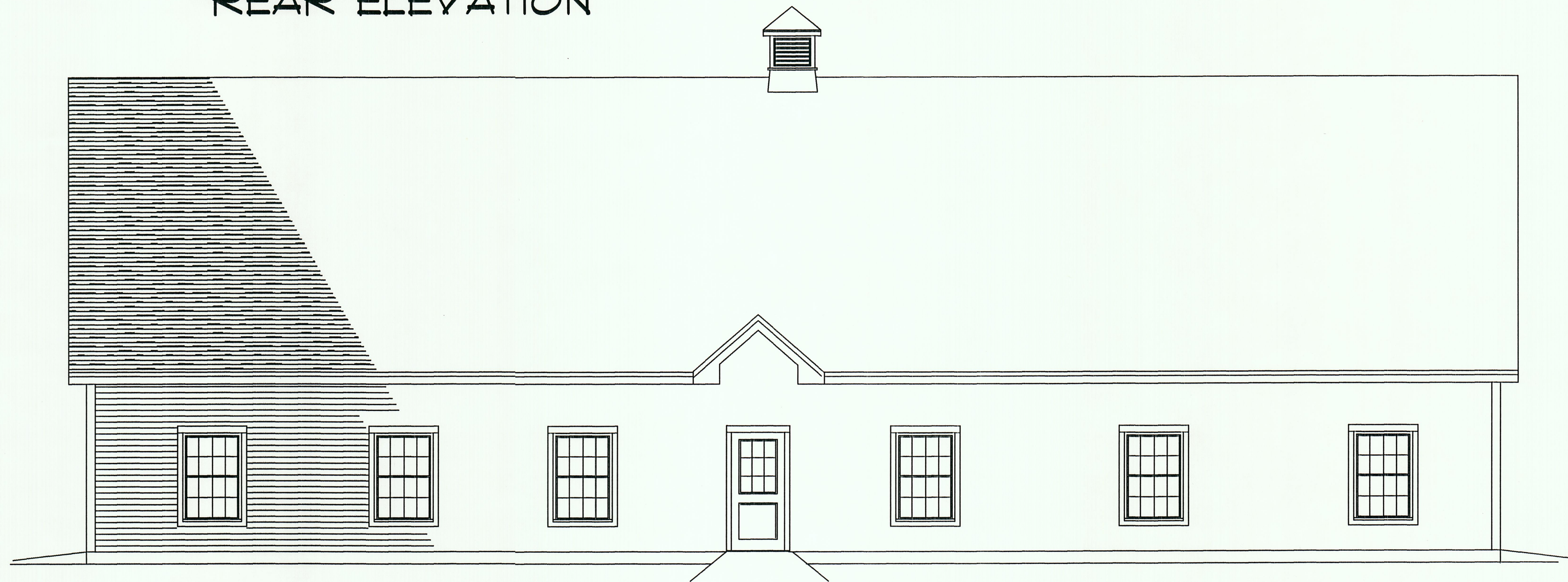
LIPPMAN BLD 2

885B ROOSEVELT TRAIL, WINDHAM

DRAWING

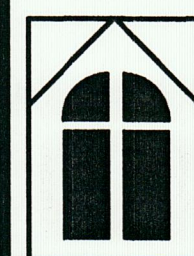
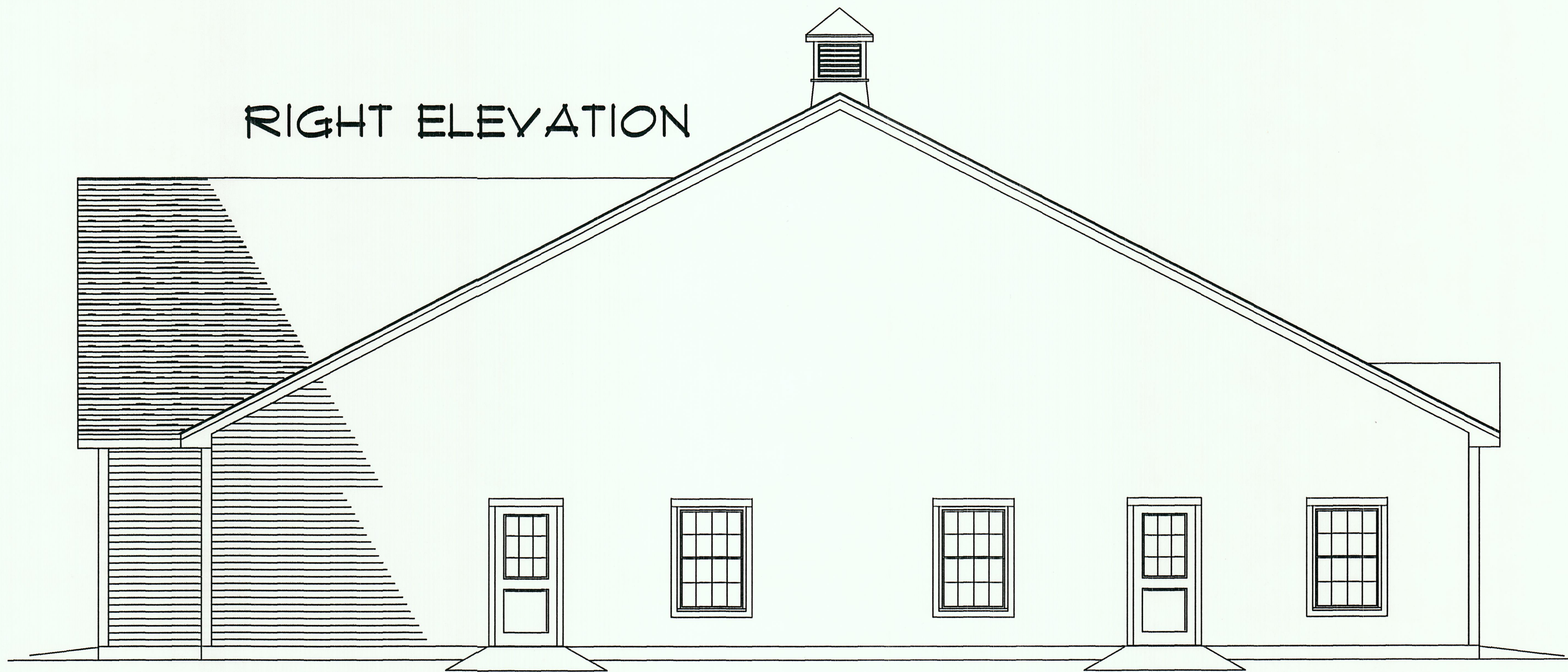
FRONT AND LEFT ELEVATIONS

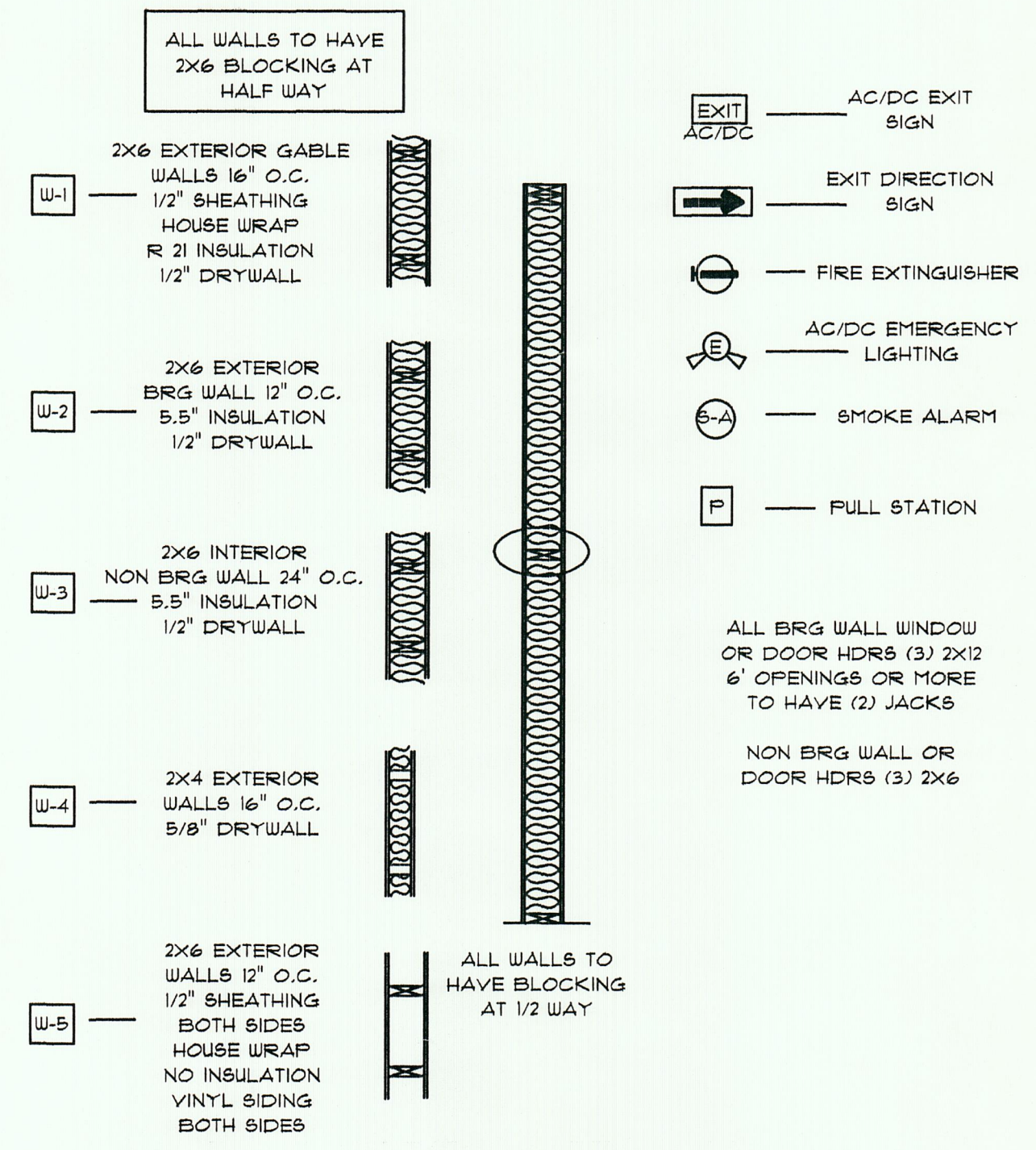
REAR ELEVATION



THESE DRAWINGS FOR BID OR APPRAISAL PURPOSES ONLY - NOT FOR CONSTRUCTION OR PERMITS

RIGHT ELEVATION





SINCE ALL DOOR COMPANIES MAKE THE SAME SIZE DOORS, WE SHOW THE DOOR SIZES
IN THE DOOR SCHEDULES BELOW.
BUT SINCE WINDOW SIZES DIFFER DEPENDING ON BRAND BY ONE OR TWO INCHES, THE
WINDOWS SHOWN AND SIZED ON THESE DRAWINGS ARE CLOSE BUT ONLY APPROXIMATE.
WE THEREFORE LEAVE THE WINDOW SCHEDULES BELOW BLANK SO THAT THE BUILDER OR
THE OWNER CAN FILL IT IN BEFORE CONSTRUCTION (OR PERMITS IF THE C.E.O. NEEDS IT).

WINDOWS SHOWN ON PLAN: A) DH/EGRESS B) DH

WINDOW SCHEDULE:

SIZE AND STYLE	ROUGH OPENING	QUANTITY
(A)		18
(B)		2

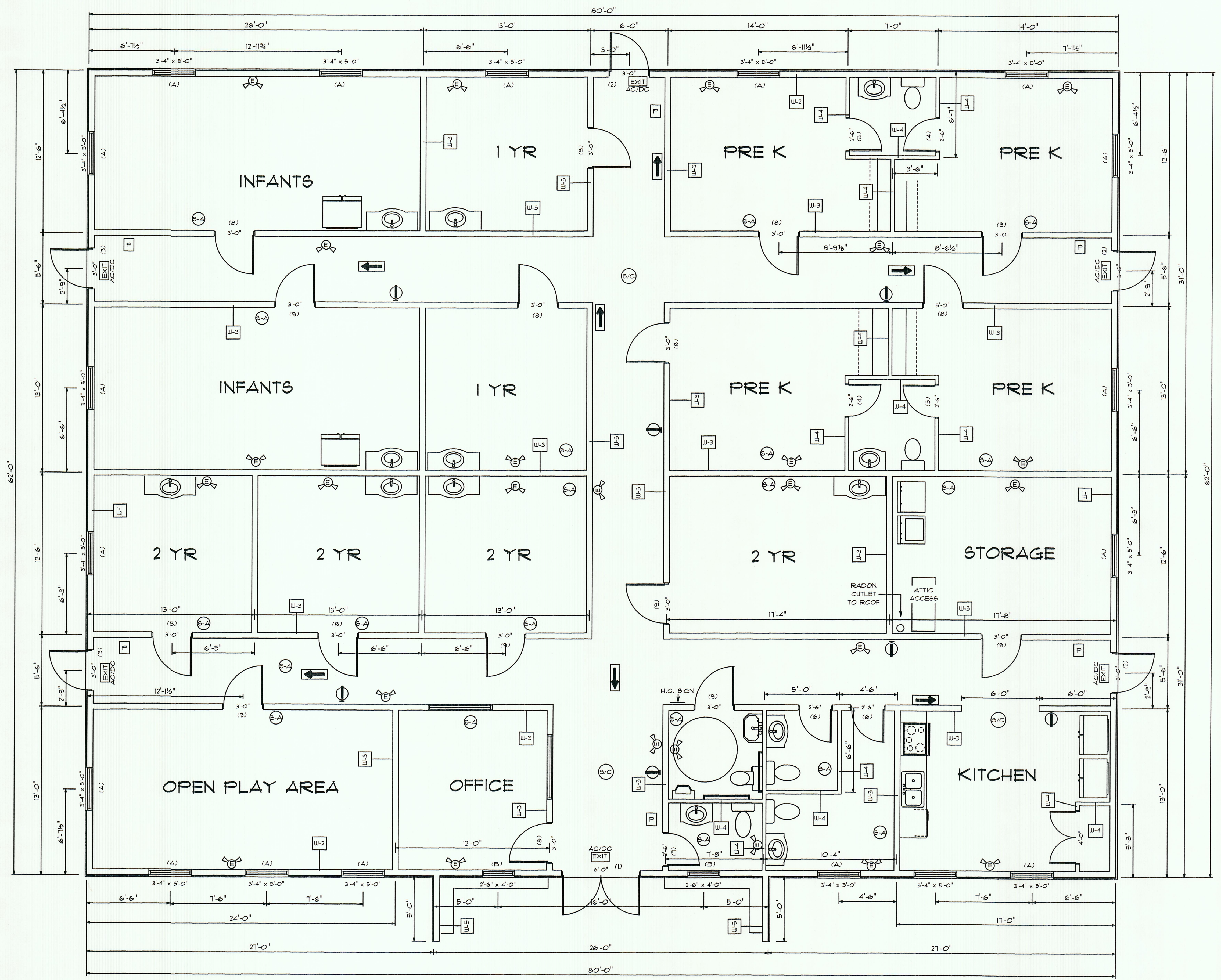
EXTERIOR DOOR SCHEDULE:

SIZE AND STYLE	ROUGH OPENING	QUANTITY
(1) 6' COMMERCIAL ENTRY OUTSWING DOOR WITH CRASH HARDWARE		1
(2) 3' ENTRY OUT SWING RH WITH GLASS LITE AND CRASH HARDWARE		3
(3) 3' ENTRY OUT SWING LH WITH GLASS LITE AND CRASH HARDWARE		2

INTERIOR DOOR SCHEDULE:

SIZE AND STYLE	ROUGH OPENING	QUANTITY
(4) 2'-6" LH SOLID CORE 3 1/2" WALL WITH LEVER HARDWARE		2
(5) 2'-6" RH SOLID CORE 3 1/2" WALL WITH LEVER HARDWARE		2
(6) 2'-6" LH SOLID CORE 5 1/2" WALL WITH LEVER HARDWARE		2
(7) 2'-6" RH SOLID CORE 5 1/2" WALL WITH LEVER HARDWARE		1
(8) 3'-0" LH SOLID CORE 5 1/2" WALL WITH SAFETY GLASS LIGHT & LEVER HARDWARE		8
(9) 3'-0" RH SOLID CORE 5 1/2" WALL WITH SAFETY GLASS LIGHT & LEVER HARDWARE		8
(10) 4'-0" BI-FOLD		1

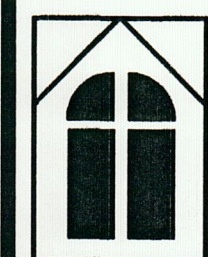
VERIFY ALL WINDOW AND DOOR STYLES, SIZES, SWINGS, AND QUANTITIES BEFORE ORDERING
ALL INTERIOR DOOR TO HAVE AUTOMATIC CLOSERS



THESE DRAWINGS FOR BID OR APPRAISAL PURPOSES ONLY - NOT FOR CONSTRUCTION OR PERMITS



THESE DRAWINGS ARE TO BE USED FOR BIDS OR APPRAISAL ONLY.
THEY ARE NOT TO BE USED FOR PERMITS. USE OR REPRODUCTION OF THESE
DRAWINGS FOR CONSTRUCTION VIOLATES FEDERAL COPYRIGHT LAWS.

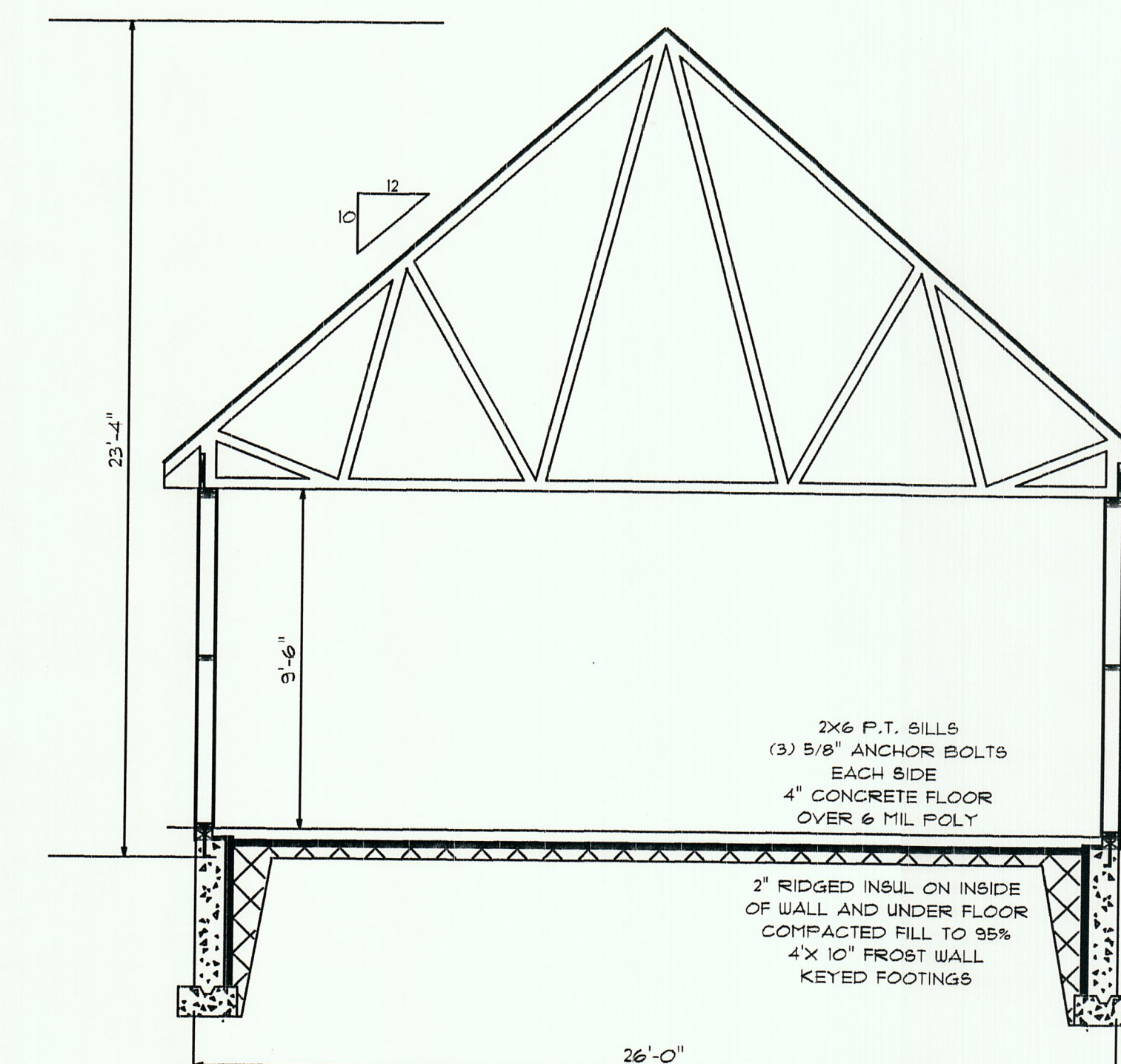
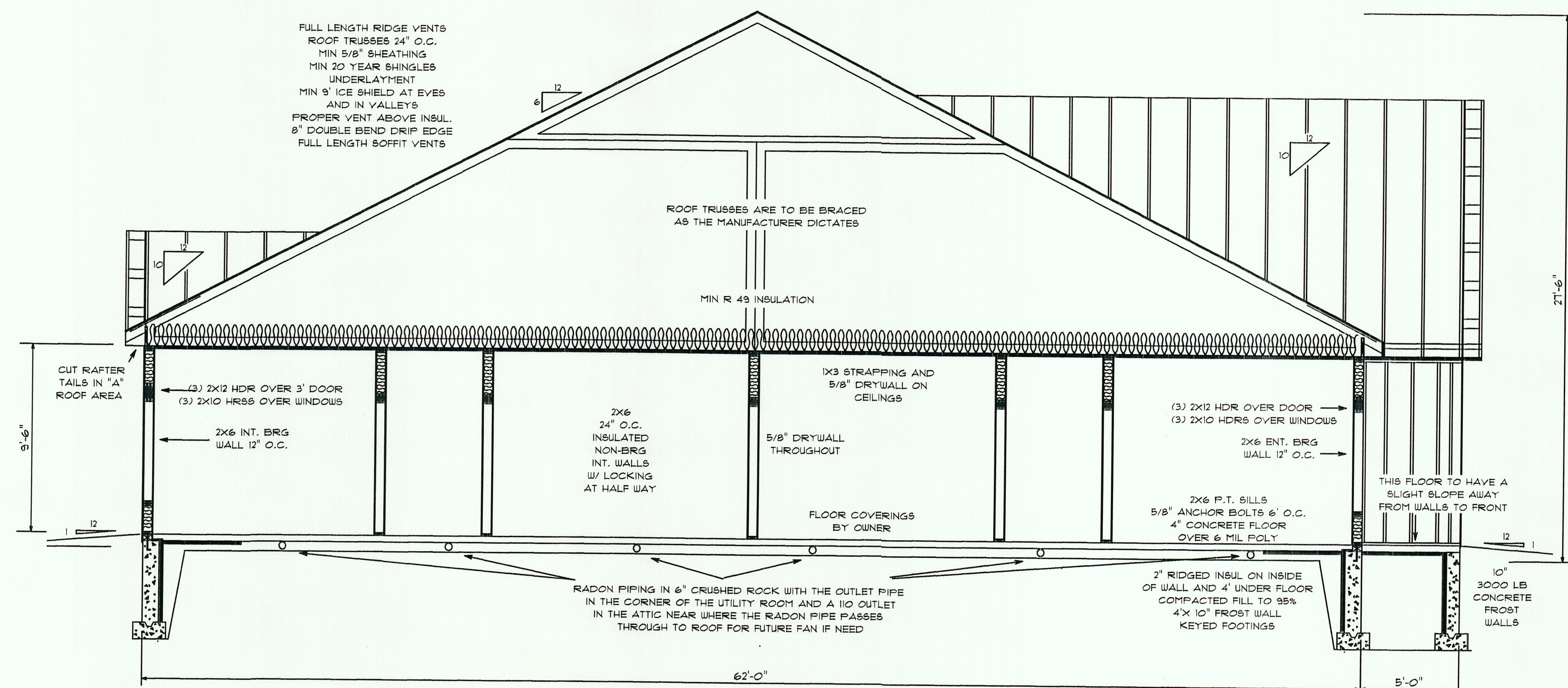


J. CALL DESIGN
PLANNING AND DESIGN SERVICES FOR
RESIDENTIAL AND COMMERCIAL
151 ROOSEVELT TRAIL, WINDHAM, ME. 207-892-2810

SCALE 1/4" = 1'	DRAWN BY J. CALL
12/2016	3 OF 5
DATE	PAGE

BID PLANS ONLY

LIPPMAN BLD 2
885B ROOSEVELT TRAIL, WINDHAM
DRAWING
FLOOR PLAN



THESE DRAWINGS FOR BID OR APPRAISAL PURPOSES ONLY - NOT FOR CONSTRUCTION OR PERMITS

