



Innovation  
that excites

2017  
**LEAF®**

Zero Emission™

#### WELCOME TO THE 2017 NISSAN LEAF DIGITAL BROCHURE

Full of images, feature stories, and all the specification and trim level information you need to help select your Nissan LEAF.



Follow Nissan Canada on:



Facebook® is a registered trademark of Facebook, Inc. Twitter® is a registered trademark of Twitter, Inc.  
YouTube® is a registered trademark of Google Inc. Instagram® is a registered trademark of Instagram, LLC.

**DEP**  
DEALER ePROCESS



**ELECTRIFY YOUR** day with all energy, no exhaust. Wake up fully charged, and get where you're going with swift power out of the gate. Change course: Take the scenic route, stay out longer with confidence. Embrace the future in the world's best-selling fully electric car.<sup>1</sup> Now with a newly standard, longer range than ever. The 2017 Nissan LEAF.<sup>®</sup> A whole new outlook on **EVERY DRIVE.**



Winner:  
Battery Electric Vehicle for the 2016 Canadian Green Car Award<sup>2</sup>

Discover how the innovative Nissan LEAF fits into your day – no matter what life you lead.

Go to [nissan.ca/dayinalleaf](http://nissan.ca/dayinalleaf)



Vehicles in the brochure are shown without front and rear splash guards, which are standard equipment on all Nissan LEAF<sup>®</sup> models. <sup>1</sup>Best selling 100% electric vehicle in history, with global sales of over 230,000 August, 2016. <sup>2</sup>The Canadian Green Car of the Year Award is Canada's premier award recognizing vehicles with the greatest potential to minimize the overall impact of automobiles on our environment. Vehicles were evaluated for environmental benefits as well as their mass-market potential. For more information, see [canadiangreencaraward.ca](http://canadiangreencaraward.ca). Nissan LEAF was the Category Winner – Battery Electric Vehicle for the 2016 Canadian Green Car Award.

Nissan LEAF<sup>®</sup> SL shown in Pearl White.



# CHARGE. DRIVE. REPEAT. IT'S THAT EASY.

On average, most people drive less than 42 kilometres a day.<sup>1</sup> Nissan LEAF® can take you 4 times that on a single charge.<sup>2</sup> Just plug it in to charge overnight and in the morning you'll be ready to go, with tools to help you manage your range along the way. Of course, driving at moderate, more constant speeds is always a good idea. You can even switch to Eco mode to improve your range up to 10% in certain conditions. With Nissan LEAF, the little things can make a big difference. And for added peace of mind, Nissan provides three years of complimentary roadside assistance with every Nissan LEAF.<sup>3</sup>

**“Fill up” at home. Faster than ever.** With the 240-volt home charging dock, Nissan LEAF charges in as little as 6 hours.<sup>4</sup> All you have to do is plug it in, like you would your laptop or cell phone. To take advantage of off-peak rates, you can set a charging timer right on the dash.

## NissanConnect<sup>SM</sup>

**Your world, at your fingertips.** Google® Search for a local yoga class. Call hands-free to invite friends to dinner. Find the closest charging station on your route.<sup>5,6</sup> All the while, your hand-picked music and podcasts, SiriusXM® Traffic information,<sup>7</sup> and more are just a swipe or a tap away. NissanConnect makes it all possible,<sup>5,6</sup> working seamlessly together through your smartphone and Nissan LEAF's high-resolution, 178 mm (7.0") colour touch-screen with tap and swipe control.<sup>8</sup> Nissan LEAF also helps keep you in the loop with the Nissan Navigation System (featuring Voice Recognition),<sup>9</sup> hands-free text messaging assistant,<sup>10</sup> Bluetooth® hands-free calling and streaming audio,<sup>11</sup> and an iPod®/USB connection port.<sup>8</sup>

## NISSANCONNECT EV

**Talk to your LEAF. It listens.**

NissanConnect EV makes the conversation possible, with a smartphone app that lets you keep in touch with your LEAF remotely. Which means you can ask it to do things like start charging or turn the heat on. And LEAF will even answer, like when it sends you a friendly message to let you know it's finished charging. You can also log on to NissanConnect EV on your laptop, where you'll discover more ways to make driving electric easy and fun. And don't forget to check your phone – that might be your LEAF calling.<sup>5,12</sup>

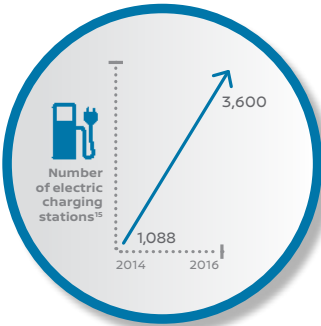


eco drive indicator

power meter

trip computer

estimated range



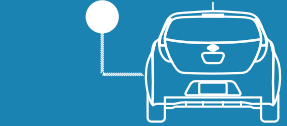
## The tools to go the distance.

There are plenty of tools right on your dashboard to help you get the most out of every charge. You'll always see your battery level, and how many kilometres remain in your driving range.<sup>14</sup> Driving efficiently? You won't have to guess. The power meter shows how much power you're using – and generating, thanks to Nissan LEAF's regenerative braking system that captures the energy created while you coast or brake and recycles it back into the power supply. And if you're doing really well, you'll grow a virtual forest on the Eco drive indicator.

<sup>1</sup>Natural Resources Canada, 2010. <sup>2</sup>2017 EPA range of up to 172 kilometres. Actual range may vary. Use for comparison only. <sup>3</sup>See your Nissan dealer and read the Roadside Assistance section of your Warranty Information Booklet for complete details and eligibility requirements. <sup>4</sup>Approximate time, with available 240-V home charging dock (sold separately). <sup>5</sup>Available feature. <sup>6</sup>Driving is serious business. Only use NissanConnect<sup>SM</sup> Mobile Apps when safe to do so. App availability is dependent upon vehicle model, trim level, packaging, and/or options. See [Nissan.ca/NissanConnect](http://Nissan.ca/NissanConnect) for complete app availability details. Never program while driving. GPS mapping may not be detailed in all areas or reflect current road status. Compatible smartphone required. Cellular network and GPS signals not available in all areas and/or at all times. Cellular technology is evolving, and changes to cellular networks provided by independent companies are not within Nissan's control. Nissan is not responsible for associated costs that may be required for continued operation due to cellular network termination (including equipment upgrades, if available, or roaming charges on alternative networks). Should cellular provider terminate/restrict service, service may be terminated without notice and with no liability to Nissan and its agents or affiliates. Subscription Agreement required and terms and conditions of Subscription Agreement apply. See [Nissan.ca/NissanConnect](http://Nissan.ca/NissanConnect) for details. Text rates and/or data usage may apply. <sup>7</sup>NavTraffic®/SiriusXM® Traffic is available in select North American markets. In Canada, at time of printing, incident and flow data is available for 12 metropolitan areas of Canada (Vancouver, Calgary, Edmonton, Toronto, Ottawa, Montreal, Quebec City, Hamilton, St. Catharines, Kitchener, Guelph, and London). Subscription sold separately after trial period. Subscriptions subject to customer agreement at [siriusxm.ca/terms](http://siriusxm.ca/terms). Fees and programming subject to change. ©2016 Sirius XM Canada Inc. Sirius, XM, SiriusXM, and NavTraffic® are registered trademarks of Sirius XM Radio Inc. All other trademarks are property of their respective owners. <sup>8</sup>Driving is serious business and requires your full attention. If you have to use the connected device while driving, exercise extreme caution at all times so full attention may be given to vehicle operation. External device not included. <sup>9</sup>Never program while driving. GPS mapping may not be detailed in all areas or reflect current road status. <sup>10</sup>Use the text messaging feature after stopping your vehicle in a safe location. If you have to use the feature while driving, exercise extreme caution at all times so full attention may be given to vehicle operation. Compatible smartphone required. Text rates and/or data usage may apply. <sup>11</sup>Availability of specific features is dependent upon the phone's Bluetooth® support. Please refer to your phone Owner's Manual for details. Bluetooth word mark and logos are owned by Bluetooth SIG, Inc., and any use of such marks by Nissan is under licence. <sup>12</sup>NissanConnect<sup>SM</sup> EV requires compatible GSM/GPRS cellular network provided by independent cellular companies not within Nissan's control. Cellular network not available in all areas and/or available at all times. In areas with network coverage, signal strength may vary and/or not be available at all times. Technology is evolving, and changes to cellular networks or other third party changes may affect future NissanConnect<sup>SM</sup> EV functionality. Should a third party provider terminate/further restrict network service, NissanConnect<sup>SM</sup> EV service may be suspended or terminated without notice or liability to Nissan and/or its agents or affiliates. Like other devices that rely on network coverage, once the network is terminated, NissanConnect<sup>SM</sup> EV will not function unless equipment replacements, upgrades, or alternative network coverage are available at that time, which Nissan cannot guarantee. Nissan is not responsible for associated costs that may be required for continued NissanConnect<sup>SM</sup> EV operation due to cellular network termination (including equipment upgrades, if available, or roaming charges on alternative networks) or other third party changes. Certain remote functions require compatible smartphone, not included with vehicle. NissanConnect<sup>SM</sup> EV subscription service requires owner consent to activate. Text rates and/or data usage may apply to NissanConnect<sup>SM</sup> EV communications received by email or SMS/text message. Terms and conditions of Subscription Agreement apply. <sup>13</sup>HOV access varies by province. Please consult provincial laws for eligibility. <sup>14</sup>Mileage estimates only. Range will vary depending upon driving/charging habits, speed, conditions, weather, temperatures, and battery age. <sup>15</sup>Availability/accessibility of charging stations is not guaranteed. <sup>16</sup>For tailpipe emissions. iPod® is a registered trademark of Apple, Inc. All rights reserved. iPod® or other external device not included.



## A DAY IN THE LIFE OF NISSAN LEAF



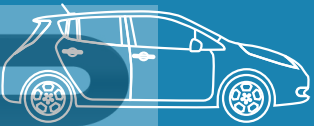
Wake up fully charged and start off comfy with remote climate control (a great way to help extend range). Nissan LEAF is ready. Let's go!<sup>5,6</sup>



Whoosh! Nissan LEAF has highway speeds and 100% torque right off the line.



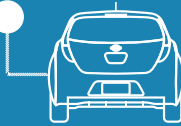
Get places faster with single-occupancy access to the carpool lane. Your reward for driving electric (select provinces only).<sup>18</sup>



Thanks to regenerative brakes, Nissan LEAF charges anytime you slow down. Stop-and-go traffic is your new best friend.



Lots of errands and little time? Good thing you can use your Zero Emissions Menu to get the most economical route, see driving range, and get real-time traffic updates.<sup>5,6,7,14</sup>



Just another day of driving electric. No gas, no emissions!<sup>16</sup> Then charge at home during off-peak hours while you sleep.



# EFFICIENCY, CELEBRATED

**Packing power.**  
Nissan LEAF's compact lithium-ion battery is twice as powerful and half the weight of nickel-metal hydride batteries used in traditional hybrid cars. Its arrangement in the floor of the vehicle means interior roominess and plenty of cargo space.<sup>1</sup>

**Generate energy while you drive.**  
Every time you slow down, the regenerative braking system stores that energy in the Nissan LEAF® battery. That means your car charges anytime you brake.

**Never be a drag.**  
Nissan LEAF is aerodynamically designed to keep wind resistance down and efficiency up. A drag coefficient of 0.28 is something to celebrate. Low-resistance rolling tires also come standard, and reduce the vehicle's energy output.

**It's easy to see the bright side.**  
LED low-beam headlights use half as much energy as traditional headlights. Plus, they're aerodynamically designed to maximize efficiency.<sup>2</sup>

**How does a solar-powered radio sound?**  
Like music to your ears. The photovoltaic solar-panel spoiler (SL trim only) converts sunlight into energy. It helps power your A/C, 12-volt outlet, and stereo.

## BATTERY LIMITED WARRANTY 160,000 KILOMETRES 8 YEARS

*The comprehensive Nissan LEAF lithium-ion battery limited warranty also protects against capacity loss below 9 bars of capacity (out of 12) as shown on the LEAF's capacity gauge for a period of 8 years/160,000 kilometres (whichever occurs first).<sup>3</sup>*

# SAY HELLO TO MORE RANGE THAN EVER

Nissan LEAF is all about progress. That's why every 2017 Nissan LEAF now comes with a larger, newly standard, 30 kWh battery that offers more range than ever.

172 KM RANGE<sup>4</sup>

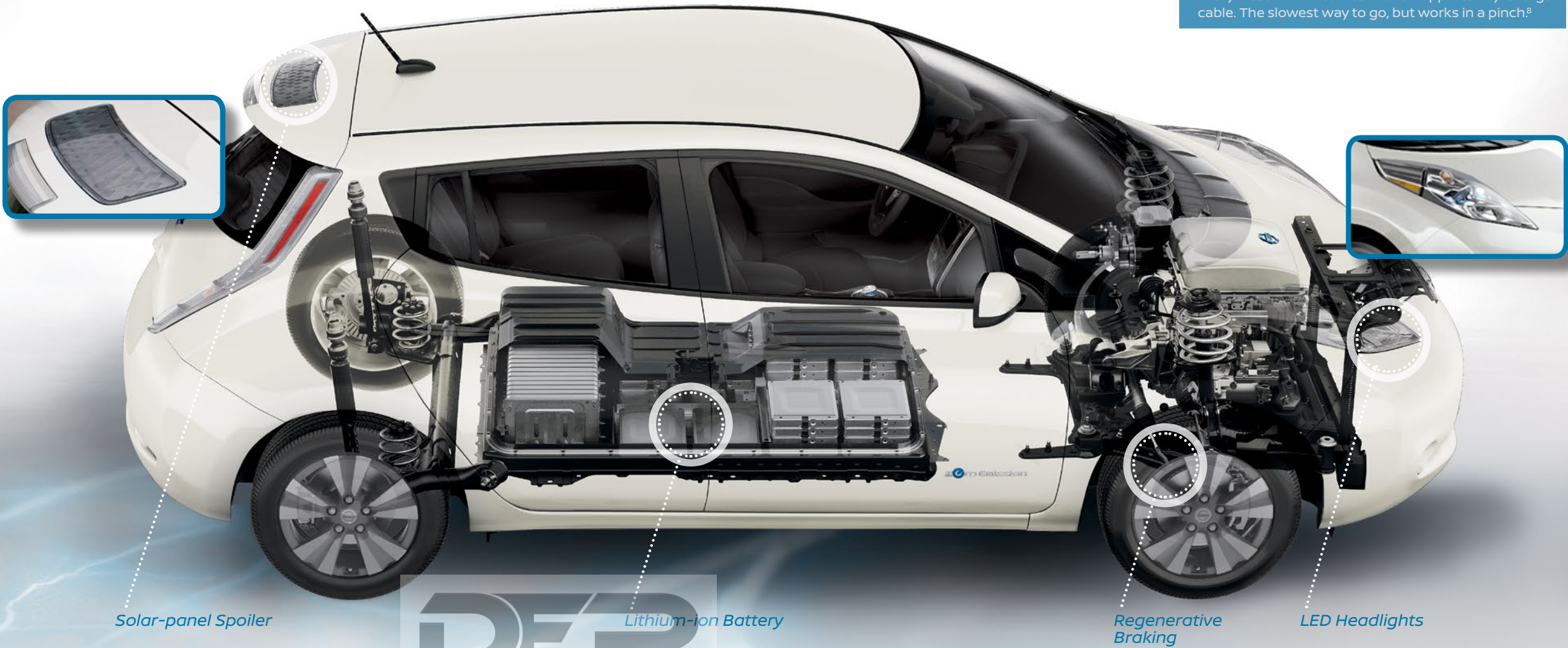
30 kWh BATTERY

**Normal Charge – 240-volt home charging dock:**  
Nissan LEAF can charge in as little as 6 hours.<sup>5</sup>

**Public Charge Availability:**  
We're working with government and private companies to expand the public charging network. Over 3,600 public charging stations are currently in place.<sup>6</sup>

**Quick Charge – DC fast-charge station:**  
Quick Charge port lets you reach 80% charge in about 30 minutes.<sup>7</sup> Do your shopping, come back out, and you're good to go.

**Opportunity Charge – 110/120-V cable:**  
Every Nissan LEAF comes with an opportunity-charge cable. The slowest way to go, but works in a pinch.<sup>8</sup>



<sup>1</sup>Cargo and load capacity limited by weight and distribution. Always secure all cargo. <sup>2</sup>Available feature. <sup>3</sup>The limited Nissan LEAF® lithium-ion battery warranty includes coverage for defects in materials or workmanship for 8 years/160,000 kilometres (whichever occurs first) as well as protection against capacity loss below 9 bars of capacity (out of 12) as shown on the LEAF's capacity gauge for a period of 8 years/160,000 kilometres. For complete information concerning coverage, conditions and exclusions, see your Nissan dealer and read the actual New Vehicle Limited Warranty booklet. <sup>4</sup>2017 EPA range of up to 172 kilometres. Actual range may vary. Use for comparison only. <sup>5</sup>Approximate time with available 240-V home charging dock, purchased separately. <sup>6</sup>Availability/accessibility of charging stations is not guaranteed. <sup>7</sup>Faster estimated charge time based with 400-volt charging dock and 6.6 kW onboard charger. Charge times may vary. <sup>8</sup>Use only a 110–120 volt, 15-amp dedicated outlet for charging.



## LOOKS GOOD, SOUNDS GOOD, FEELS GOOD

Inside Nissan LEAF® you'll find all the right comforts and conveniences, with five seats, plenty of smart storage throughout, and USB connectivity.<sup>1</sup> Plus all the high-tech features you'd expect from a car this innovative, like a Nissan Navigation System<sup>2,3</sup> and Bose® Premium Audio System.<sup>3</sup> Of course, we didn't forget the essentials, like Bluetooth,<sup>4</sup> SiriusXM® Satellite Radio,<sup>5</sup> a RearView Monitor,<sup>6</sup> heated front and rear seats, and six airbags to help keep you safe.<sup>7</sup> Top it off with sleek, black leather-appointed seats exclusive to the SL trim. All this, and 100% electric, too.

U.S. instrumentation shown.

**DEALER ePR**

### Energy-efficient Bose® Premium Audio System

Bose® came on board with their own energy-efficient solution designed just for Nissan LEAF. An ultra-lightweight, compact, energy-saving speaker system with the concert-hall sound Bose® is known for.<sup>3</sup>

### Around View® Monitor

Thanks to this handy feature, four cameras give you a virtual 360° bird's-eye view of your Nissan LEAF,<sup>8</sup> with selectable split-screen close-ups of the front, rear, and curbside views. Now you can snag that space right in front – exactly where Nissan LEAF should be.<sup>3,6</sup>

<sup>1</sup>Driving is serious business and requires your full attention. If you have to use the connected device while driving, exercise extreme caution at all times so full attention may be given to vehicle operation. External device not included. <sup>2</sup>Never program while driving. GPS mapping may not be detailed in all areas or reflect current road status. <sup>3</sup>Available feature. <sup>4</sup>Availability of specific features is dependent upon the phone's Bluetooth® support. Please refer to your phone Owner's Manual for details. Bluetooth word mark and logos are owned by Bluetooth SIG, Inc., and any use of such marks by Nissan is under licence. <sup>5</sup>XM® and SiriusXM® Satellite Radio is available in the 10 Canadian provinces and the 48 contiguous United States. Basic monthly subscription required and sold separately after trial period. NavTraffic®/SiriusXM® Traffic is available in select North American markets. In Canada, at time of printing, incident and flow data is available for 12 metropolitan areas of Canada (Vancouver, Calgary, Edmonton, Toronto, Ottawa, Montreal, Quebec City, Hamilton, St. Catharines, Kitchener, Guelph, and London). Subscription sold separately after trial period. All subscriptions subject to customer agreement at [siriusxm.ca/terms](http://siriusxm.ca/terms). Fees and programming subject to change. ©2016 Sirius XM Canada Inc. The Sirius,® XM,® and SiriusXM® names and all related marks and logos are trademarks of Sirius XM Radio Inc. All other trademarks are the property of their respective owners. <sup>6</sup>Parking aid/convenience feature. Cannot completely eliminate blind spots. May not detect every object and does not warn of moving objects. Always check surroundings and turn to look behind you before moving vehicle. <sup>7</sup>Airbags are only a supplemental restraint system; always wear your seat belt. Even with the occupant-classification sensor, rear-facing child restraints should not be placed in the front-passenger's seat. Also, in addition to any other requirement of applicable law, all children 12 and under should ride in the rear seat properly secured in child restraints, booster seats, or seat belts according to their size. Airbags will only inflate in certain accidents; see your Owner's Manual for more details. <sup>8</sup>Virtual composite 360° view. Bose® is a registered trademark of The Bose Corporation.



# NISSAN SAFETY SHIELD PHILOSOPHY

## INNOVATION THAT LOOKS OUT FOR YOU

What if you had the confidence you need for every part of your drive? The Nissan Safety Shield philosophy is a comprehensive approach to safety that guides the engineering and development of every vehicle we make.

### MONITOR

Smart technologies are designed to help monitor conditions. Like a system that helps ensure you're travelling on properly inflated tires.



**Tire Pressure Monitoring System (TPMS) with class-exclusive Easy-Fill Tire Alert<sup>1,2,3</sup>**  
TPMS lets you know when a tire is low. And Easy-Fill Tire Alert takes the guesswork out of filling your tires, with a beep of the horn when you've reached the correct pressure.



<sup>1</sup>TPMS is not a substitute for regular tire pressure checks. <sup>2</sup>Class also includes 2016 Mitsubishi® i-Miev, 2017 Chevrolet® Volt®, 2016 Kia® Soul® EV, 2016 Ford® Focus® EV, and 2016 BMW® i3. Mitsubishi®, Chevrolet® Volt®, Kia® Soul®, Ford® Focus®, and BMW® are registered trademarks of other companies. <sup>3</sup>Vehicle must be on for the Easy-Fill Tire Alert to operate. <sup>4</sup>VDC, which should remain on when driving except when freeing the vehicle from mud or snow, cannot prevent accidents due to abrupt steering, carelessness, or dangerous driving techniques. <sup>5</sup>Brake Assist is only an aid to assist the driver and is not a collision warning or avoidance device. It is the driver's responsibility to be in control of the vehicle at all times. <sup>6</sup>Airbags are only a supplemental restraint system; always wear your seat belt. Even with the occupant-classification sensor, rear-facing child restraints should not be placed in the front-passenger's seat. Also, in addition to any other requirement of applicable law, all children 12 and under should ride in the rear seat properly secured in child restraints, booster seats, or seat belts according to their size. Airbags will only inflate in certain accidents; see your Owner's Manual for more details. Inflated airbags shown for illustration purposes only, actual coverage area may differ. Airbags deflate after deployment.



### RESPOND

Whether you need to hit the brakes hard or manoeuvre around an unexpected obstacle, these standard technologies help you respond to a potentially harmful situation.

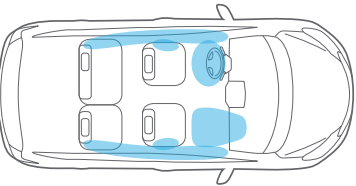
**Vehicle Dynamic Control (VDC)** Also known as stability control, VDC monitors your steering and braking to help you maintain your steered path under certain conditions by reducing electric motor output and/or applying brake pressure to specific wheels.<sup>4</sup>

**Electronic Brake force Distribution (EBD)/Brake Assist** EBD is designed to send extra force to the rear brakes when there's additional weight in the back. If you need to slam on the brakes, Brake Assist detects how hard you're braking, and if it senses you are in an emergency, it will automatically help to apply maximum braking force.<sup>5</sup>

### PROTECT

When a collision is unavoidable, Nissan's Zone Body construction helps absorb the impact while the advanced seat belt and airbag systems help protect passengers.<sup>6</sup>

**Six Standard Airbags<sup>6</sup>** Nissan Advanced Airbag System (AABS) has dual-stage supplemental front airbags with seat-belt and occupant-classification sensors.<sup>6</sup> In addition, LEAF® features driver and front passenger seat-mounted side-impact supplemental airbags<sup>6</sup> along with roof-mounted curtain side-impact supplemental airbags with rollover sensor.<sup>6</sup>



**6 STANDARD AIRBAGS<sup>6</sup>**

#### LATCH System (Lower Anchors and Tethers for Children)



Nissan safety engineers have dedicated thousands of hours to evaluating hundreds of child restraints in Nissan vehicles. The result: an industry first, The Snuggly Kids® Child Safety Seat Fit Guide. This guide lists child seats that fit the rear seats of Nissan vehicles, as well as offers invaluable tips on correct installation. Look for the latest Fit Guide at [Nissan.ca/en/owners](http://Nissan.ca/en/owners)



# GENUINE NISSAN ACCESSORIES

## IT'S UNIQUE. NOW MAKE IT YOU.

Every Genuine Nissan Accessory is: custom-fit, custom-designed and durability-tested; available for finance and backed by Nissan's 3 year/60,000 km Accessories limited warranty when installed by dealer at time of your vehicle purchase.<sup>1</sup>

A. **Holographic Kick Plates (2-piece set)**  
For a grand entry every time.

B. **Carpeted Cargo Mat<sup>2,3</sup>**  
A protected LEAF is a happy LEAF.

C. **All-season Floor Mats**  
Happiness is carpet that looks brand new.

D. **Rear Bumper Protector**  
Scratches? What scratches?

E. **Rear Cargo Cover<sup>2,3</sup>**  
Keep your valuables out of sight.

F. **Cargo Organizer<sup>2,3</sup>**  
Indulge your inner neat freak.

### Additional Accessories:

- Cargo Net<sup>2</sup>
- Centre Console Appliqué
- Zero Emission Body Design Graphics
- And More

## CHOOSE YOUR TRIM LEVEL

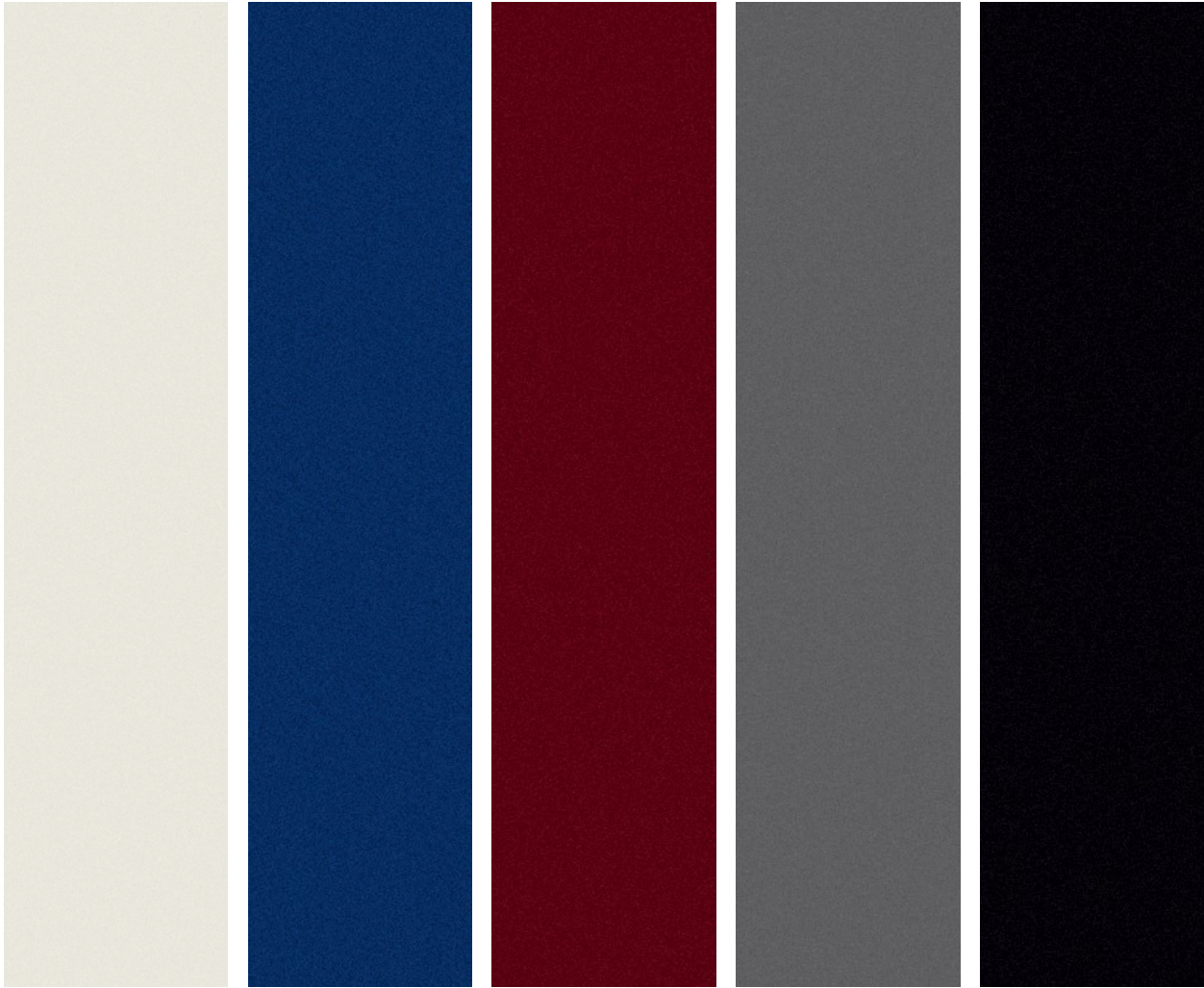
<b>S</b>	<ul style="list-style-type: none"><li>▪ 80 kW AC synchronous electric motor</li><li>▪ 30 kWh lithium-ion (Li-ion) battery</li><li>▪ 6.6 kW onboard charger</li><li>▪ Zero Emissions Vehicle (ZEV)</li><li>▪ B-mode (regenerative braking drive mode)</li><li>▪ Vehicle Dynamic Control (VDC)<sup>4</sup> with Traction Control System (TCS)</li><li>▪ Portable trickle-charge cable</li><li>▪ Normal and Quick charge ports</li><li>▪ RearView Monitor<sup>5</sup></li><li>▪ Charge port light and lock</li><li>▪ Nissan Intelligent Key® with Push Button Start</li><li>▪ Heated front and rear seats</li><li>▪ Heated leather-wrapped steering wheel</li></ul> <ul style="list-style-type: none"><li>▪ Steering wheel-mounted cruise control</li><li>▪ Automatic Temperature Control (ATC)</li><li>▪ 60/40 Split fold-down rear seats with rear seat heater ducts</li><li>▪ Hands-free text messaging assistant<sup>6</sup></li><li>▪ Streaming audio via Bluetooth®<sup>7</sup></li><li>▪ Bluetooth® Hands Free Phone System<sup>7</sup></li><li>▪ AM/FM/CD audio system with 127 mm (5.0") colour monitor and four speakers</li><li>▪ USB connection port for iPod® and other compatible devices<sup>8</sup></li><li>▪ Splash guards</li><li>▪ Six standard airbags<sup>9</sup></li><li>▪ Tire Pressure Monitoring System (TPMS) with Easy-Fill Tire Alert<sup>10,11</sup></li><li>▪ SiriusXM® Satellite Radio<sup>12</sup></li></ul>	   
<b>SV</b>	<b>INCLUDES S EQUIPMENT PLUS:</b> <ul style="list-style-type: none"><li>▪ NissanConnect<sup>SM</sup> with Navigation and Mobile Apps, including 178 mm (7.0") multi-touch control colour monitor<sup>13,14</sup></li><li>▪ SiriusXM® Traffic<sup>12</sup></li><li>▪ Nissan Voice Recognition for navigation and audio<sup>14</sup></li><li>▪ NissanConnect EV: allowing for remote connection to vehicle<sup>15</sup></li></ul> <ul style="list-style-type: none"><li>▪ Six speakers</li><li>▪ 17" 5-spoke aluminum-alloy wheels with P215/50R17 all-season tires</li><li>▪ Hybrid heater system</li><li>▪ Auto-dimming rearview mirror</li><li>▪ Bio suede cloth seats</li><li>▪ Front passenger seatback pocket</li></ul>	 
<b>SL</b>	<b>INCLUDES SV EQUIPMENT PLUS:</b> <ul style="list-style-type: none"><li>▪ Leather-appointed seats</li><li>▪ Aerodynamic LED headlights</li><li>▪ Automatic on/off headlights</li><li>▪ Fog lights</li><li>▪ HomeLink® universal garage-door opener</li></ul> <ul style="list-style-type: none"><li>▪ Photovoltaic solar-panel rear spoiler</li><li>▪ Cargo cover</li><li>▪ Bose® Premium Audio System with AM/FM/CD and seven speakers</li><li>▪ Around View® Monitor<sup>5</sup></li></ul>	 

See your Nissan dealer for details, or go to [accessories.nissan.ca](http://accessories.nissan.ca)

<sup>1</sup>See your Nissan Dealership and read the actual limited warranty. <sup>2</sup>Cargo and load capacity limited by weight and distribution. Always secure all cargo. <sup>3</sup>U.S. interior colour combination shown. Accessory only available in black. <sup>4</sup>VDC, which should remain on when driving except when freeing the vehicle from mud or snow, cannot prevent accidents due to abrupt steering, carelessness, or dangerous driving techniques. <sup>5</sup>Parking aid/convenience feature. Cannot completely eliminate blind spots. May not detect every object and does not warn of moving objects. Always check surroundings and turn to look behind you before moving vehicle. <sup>6</sup>Use the text messaging feature after stopping your vehicle in a safe location. If you have to use the feature while driving, exercise extreme caution at all times so full attention may be given to vehicle operation. Compatible smartphone required. Text rates and/or data usage may apply. <sup>7</sup>Availability of specific features is dependent upon the phone's Bluetooth® support. Please refer to your phone Owner's Manual for details. Bluetooth® word mark and logos are owned by Bluetooth SIG, Inc., and any use of such marks by Nissan is under licence. <sup>8</sup>Driving is serious business and requires your full attention. If you have to use the connected device while driving, exercise extreme caution at all times so full attention may be given to vehicle operation. iPod® is a registered trademark of Apple, Inc. All rights reserved. iPod® or other external device not included. <sup>9</sup>Airbags are only a supplemental restraint system; always wear your seat belt. Even with the occupant-classification sensor, rear-facing child restraints should not be placed in the front-passenger's seat. Also, in addition to any other requirement of applicable law, all children 12 and under should ride in the rear seat properly secured in child restraints, booster seats, or seat belts according to their size. Airbags will only inflate in certain accidents; see your Owner's Manual for more details. <sup>10</sup>TPMS is not a substitute for regular tire pressure checks. <sup>11</sup>Vehicle must be on for the Easy-Fill Tire Alert to operate. <sup>12</sup>XM® and SiriusXM® Satellite Radio is available in the 10 Canadian provinces and the 48 contiguous United States. Basic monthly subscription required and sold separately after trial period. NavTraffic®/SiriusXM® Traffic is available in select North American markets. In Canada, at time of printing, incident and flow data is available for 12 metropolitan areas of Canada (Vancouver, Calgary, Edmonton, Toronto, Ottawa, Montreal, Quebec City, Hamilton, St. Catharines, Kitchener, Guelph, and London). Subscription sold separately after trial period. All subscriptions subject to customer agreement at [siriusxm.ca/terms](http://siriusxm.ca/terms). Fees and programming subject to change. ©2016 Sirius XM Canada Inc. The Sirius® XM,® and SiriusXM® names and all related marks and logos are trademarks of Sirius XM Radio Inc. All other trademarks are the property of their respective owners. <sup>13</sup>Driving is serious business. <sup>14</sup>Driving is serious business. Only use NissanConnect<sup>SM</sup> Mobile Apps when safe to do so. App availability is dependent upon vehicle model, trim level, packaging, and/or options. See [Nissan.ca/NissanConnect](http://Nissan.ca/NissanConnect) for complete app availability details. Never program while driving. GPS mapping may not be detailed in all areas or reflect current road status. Compatible smartphone required. Cellular network and GPS signals not available in all areas and/or at all times. Cellular technology is evolving, and changes to cellular networks provided by independent companies are not within Nissan's control. Nissan is not responsible for associated costs that may be required for continued operation due to cellular network termination (including equipment upgrades, if available, or roaming charges on alternative networks). Should cellular provider terminate/restrict service, service may be terminated without notice and with no liability to Nissan and its agents or affiliates. Subscription Agreement required and terms and conditions of Subscription Agreement apply. See [Nissan.ca/NissanConnect](http://Nissan.ca/NissanConnect) for details. Text rates and/or data usage may apply. <sup>15</sup>Never program while driving. GPS mapping may not be detailed in all areas or reflect current road status. <sup>16</sup>NissanConnect<sup>SM</sup> EV requires compatible GSM/GPRS cellular network provided by independent cellular companies not within Nissan's control. Cellular network not available in all areas and/or available at all times. In areas with network coverage, signal strength may vary and/or not be available at all times. Technology is evolving, and changes to cellular networks or other third party changes may affect future NissanConnect EV functionality. Should a third party provider terminate/further restrict network service, NissanConnect EV service may be suspended or terminated without notice or liability to Nissan and/or its agents or affiliates. Like other devices that rely on network coverage, once the network is terminated, NissanConnect EV will not function unless equipment replacements, upgrades, or alternative network coverage are available at that time, which Nissan cannot guarantee. Nissan is not responsible for associated costs that may be required for continued NissanConnect EV operation due to cellular network termination (including equipment upgrades, if available, or roaming charges on alternative networks) or other third party changes. Certain remote functions require compatible smartphone, not included with vehicle. NissanConnect EV subscription service requires owner consent to activate. Text rates and/or data usage may apply to NissanConnect EV communications received by email or SMS/text message. Terms and conditions of Subscription Agreement apply. HomeLink® is a registered trademark of Centex Corporation. Bose® is a registered trademark of The Bose Corporation.



PAINT AND FABRIC



	Pearl White <sup>1</sup> QAB			Deep Blue Pearl <sup>1</sup> RAY			Coulis Red <sup>1</sup> NAW			Gun Metallic <sup>1</sup> KAD			Super Black KH3		
	S	SV	SL	S	SV	SL	S	SV	SL	S	SV	SL	S	SV	SL
BLACK CLOTH	■									■			■		
BIO SUEDE BLACK CLOTH <sup>2</sup>		■			■			■			■			■	
BLACK LEATHER			■			■			■			■			■

■ Standard  
<sup>1</sup>Extra cost option.  
<sup>2</sup>Post-consumer recycled material will exceed 30%.

Nissan has taken care to ensure that the colour swatches presented here are the closest possible representations of actual vehicle colours. Swatches may vary slightly due to viewing light or screen quality. Please see your local Nissan Dealership for actual colours and pricing information.



CHOOSE YOUR INTERIOR





100% ELECTRIC NISSAN LEAF® FAQs

Does the Nissan LEAF use gasoline?

No, never. Nissan LEAF runs off of 100% electric battery power, no gas needed. In fact, it doesn't even have a tailpipe.

Will the price include the battery pack? Or will there be an option to rent/lease the battery pack?

The total cost of the vehicle includes the battery pack. Both lease and purchase options are available for the vehicle, but not for just the battery pack.

Can I charge if I'm not at home?

Yes. Across the country you'll find a public infrastructure of charging stations. Visit [chargehub.com](#) to find a station near you.<sup>1</sup>

Will there be more public charging stations in the future?

The public charging network is expanding every day, with over 3,600 access stations in place. When DC quick-charging stations become available, they will be capable of giving you an 80% charge in just 30 minutes.<sup>2</sup>

Am I required to buy the home charging station when I purchase my Nissan LEAF?

No. However, the home charging dock is recommended.

How long will it take to charge my Nissan LEAF at home?

With the 240-volt home charging dock, your 2017 Nissan LEAF will be fully charged in as little as 6 hours.<sup>3</sup>

visit [nissan.ca/leaf](#)

Nissan's environmental action plan focuses on several key areas. In addition to increasing production of Zero Emission vehicles like the 100% electric LEAF,<sup>®</sup> we're improving fuel efficiency across our lineup, and reducing the environmental impact of manufacturing through energy-efficient practices in our plants.



<sup>1</sup>Availability/accessibility of charging stations is not guaranteed. <sup>2</sup>Faster estimated charge time based with 400-volt charging dock and 6.6 kW onboard charger. Charge times may vary. <sup>3</sup>Approximate time with available 240-V home charging dock, purchased separately. <sup>4</sup>HOV access varies by province. Please consult provincial laws for eligibility. <sup>5</sup>See your Nissan dealer and read the Roadside Assistance section of your Warranty Information Booklet for complete details and eligibility requirements. <sup>6</sup>The limited Nissan LEAF<sup>®</sup> lithium-ion battery warranty includes coverage for defects in materials or workmanship for 8 years/160,000 kilometres (whichever occurs first) as well as protection against capacity loss below 9 bars of capacity (out of 12) as shown on the LEAF's capacity gauge for a period of 8 years/160,000 kilometres. For complete information concerning coverage, conditions and exclusions, see your Nissan dealer and read the actual New Vehicle Limited Warranty booklet. <sup>7</sup>Airbags are only a supplemental restraint system; always wear your seat belt. Even with the occupant-classification sensor, rear-facing child restraints should not be placed in the front-passenger's seat. Also, in addition to any other requirement of applicable law, all children 12 and under should ride in the rear seat properly secured in child restraints, booster seats, or seat belts according to their size. Airbags will only inflate in certain accidents; see your Owner's Manual for more details. <sup>8</sup>VDC, which should remain on when driving except when freeing the vehicle from mud or snow, cannot prevent accidents due to abrupt steering, carelessness, or dangerous driving techniques. <sup>9</sup>Driving is serious business. Only use NissanConnect<sup>SM</sup> Mobile Apps when safe to do so. App availability is dependent upon vehicle model, trim level, packaging, and/or options. See [Nissan.ca/NissanConnect](#) for complete app availability details. Never program while driving. GPS mapping may not be detailed in all areas or reflect current road status. Compatible smartphone required. Cellular network and GPS signals not available in all areas and/or at all times. Cellular technology is evolving, and changes to cellular networks provided by independent companies are not within Nissan's control. Nissan is not responsible for associated costs that may be required for continued operation due to cellular network termination (including equipment upgrades, if available, or roaming charges on alternative networks). Should cellular provider terminate/restrict service, service may be terminated without notice and with no liability to Nissan and its agents or affiliates. Subscription Agreement required and terms and conditions of Subscription Agreement apply. See [Nissan.ca/NissanConnect](#) for details. Text rates and/or data usage may apply. <sup>10</sup>Never program while driving. GPS mapping may not be detailed in all areas or reflect current road status. <sup>11</sup>XM<sup>®</sup> and SiriusXM<sup>®</sup> Satellite Radio is available in the 10 Canadian provinces and the 48 contiguous United States. Basic monthly subscription required and sold separately after trial period. NavTraffic<sup>®</sup>/SiriusXM<sup>®</sup> Traffic is available in select North American markets. In Canada, at time of printing, incident and flow data is available for 12 metropolitan areas of Canada (Vancouver, Calgary, Edmonton, Toronto, Ottawa, Montreal, Quebec City, Hamilton, St. Catharines, Kitchener, Guelph, and London). Subscription sold separately after trial period. All subscriptions subject to customer agreement at [siriusxm.ca/terms](#). Fees and programming subject to change. ©2016 Sirius XM Canada Inc. The Sirius<sup>®</sup>, XM<sup>®</sup>, and SiriusXM<sup>®</sup> names and all related marks and logos are trademarks of Sirius XM Radio Inc. All other trademarks are the property of their respective owners. <sup>12</sup>Parking aid/convenience feature. Cannot completely eliminate blind spots. May not detect every object and does not warn of moving objects. Always check surroundings and turn to look behind you before moving vehicle. <sup>13</sup>Availability of specific features is dependent upon the phone's Bluetooth<sup>®</sup> support. Please refer to your phone Owner's Manual for details. Bluetooth<sup>®</sup> word mark and logos are owned by Bluetooth SIG, Inc., and any use of such marks by Nissan is under licence. <sup>14</sup>NissanConnect<sup>SM</sup> EV requires compatible GSM/GPRS cellular network provided by independent cellular companies not within Nissan's control. Cellular network not available in all areas and/or available at all times. In areas with network coverage, signal strength may vary and/or not be available at all times. Technology is evolving, and changes to cellular networks or other third party changes may affect future NissanConnect EV functionality. Should a third party provider terminate/further restrict network service, NissanConnect EV service may be suspended or terminated without notice or liability to Nissan and/or its agents or affiliates. Like other devices that rely on network coverage, once the network is terminated, NissanConnect EV will not function unless equipment replacements, upgrades, or alternative network coverage are available at that time, which Nissan cannot guarantee. Nissan is not responsible for associated costs that may be required for continued NissanConnect EV operation due to cellular network termination (including equipment upgrades, if available, or roaming charges on alternative networks) or other third party changes. Certain remote functions require compatible smartphone, not included with vehicle. NissanConnect EV subscription service requires owner consent to activate. Text rates and/or data usage may apply to NissanConnect EV communications received by email or SMS/text message. Terms and conditions of Subscription Agreement apply. <sup>15</sup>Driving is serious business and requires your full attention. If you have to use the connected device while driving, exercise extreme caution at all times so full attention may be given to vehicle operation. iPod<sup>®</sup> is a registered trademark of Apple, Inc. All rights reserved. iPod<sup>®</sup> or other external device not included. <sup>16</sup>TPMS is not a substitute for regular tire pressure checks. <sup>17</sup>Vehicle must be on for the Easy-Fill Tire Alert to operate. <sup>18</sup>2017 EPA range of up to 172 kilometres. Actual range may vary. Use for comparison only. Nissan Canada Inc. reserves the right to make changes at any time, without notice, in prices, colours, materials, equipment, specifications and models, and to discontinue models or equipment. For information on additional options and accessories, contact your Nissan Dealership. Registered trademarks are property of their respective owners. At [nissan.ca](#), you'll find a way to "build your own Nissan," a dealer locator, and more information about key Nissan support services. The Nissan names, logos, product names, feature names, and slogans are trademarks owned by or licenced to Nissan Motor Co. Ltd. and/or its North American subsidiaries. **Always wear your seat belt, and please don't drink and drive.** ©2016 Nissan Canada Inc. All rights reserved. Bose<sup>®</sup> is a registered trademark of The Bose Corporation. HomeLink<sup>®</sup> is a registered trademark of Gentex Corporation.

SPECIFICATIONS

Mechanical	S	SV	SL
80 kW AC synchronous electric motor	■	■	■
30 kWh lithium-ion (Li-ion) battery	■	■	■
6.6 kW onboard charger	■	■	■
Battery heater	■	■	■
Hybrid heater system		■	■
Emissions – Zero Emissions Vehicle (ZEV)	■	■	■
Portable trickle-charge cable (110–120 V)	■	■	■
Normal charge port	■	■	■
Quick charge port	■	■	■
Drivetrain			
Single-speed reduction gear	■	■	■
Palm-shift drive selector	■	■	■
Brakes			
Front and rear vented disc brakes	■	■	■
Regenerative braking system	■	■	■
B-mode (regenerative braking drive mode)	■	■	■
4-wheel Anti-lock Braking System (ABS)	■	■	■
Electronic Brake force Distribution (EBD) with Brake Assist	■	■	■
Suspension/Chassis Bracing/Steering			
Independent strut front suspension with coil springs	■	■	■
Torsion bar axle rear suspension with coil springs	■	■	■
Front and rear stabilizer bars	■	■	■
Vehicle-speed-sensitive electric power steering	■	■	■
Wheels/Tires			
16" steel wheels with wheel covers	■		
17" 5-spoke aluminum-alloy wheels		■	■
P205/55R16 all-season tires	■		
P215/50R17 all-season tires		■	■
Exterior Features			
Aerodynamic LED headlights			■
Aerodynamic halogen headlights	■	■	
Automatic on/off headlights			■
Fog lights			■
Photovoltaic solar-panel rear spoiler			■
Rear spoiler	■	■	
Splash guards	■	■	■
Aerodynamic underbody cover and rear diffuser	■	■	■
Dual power body-colour heated outside mirrors	■	■	■
Charge port with light and lock	■	■	■
One-touch rear hatch release	■	■	■
Comfort/Convenience			
NissanConnect <sup>SM</sup> with Navigation and Mobile Apps, including 178 mm (7.0") multi-touch control colour monitor <sup>9,10</sup>		■	■
SiriusXM <sup>®</sup> Traffic <sup>11</sup>			■
Hands-free text messaging assistant	■	■	■
Voice Destination Entry		■	■
RearView Monitor <sup>12</sup>	■	■	■
Around View <sup>®</sup> Monitor <sup>12</sup>			■
Nissan Intelligent Key <sup>®</sup> with Push Button Start	■	■	■
Bluetooth <sup>®</sup> Hands Free Phone System <sup>13</sup>	■	■	■
NissanConnect <sup>SM</sup> EV allowing for remote connection to vehicle: <sup>14</sup>			
Monitor battery state of charge/charging status		■	■
Start vehicle charging		■	■
Activate heating and air conditioning systems		■	■

Comfort/Convenience (continued)	S	SV	SL
HomeLink <sup>®</sup> universal garage-door opener			■
Automatic Temperature Control (ATC)	■	■	■
Power windows and door locks	■	■	■
Auto-dimming rearview mirror		■	■
Cruise control with steering wheel-mounted controls	■	■	■
Rear window defroster	■	■	■
Front passenger seatback pocket		■	■
Sun visors with vanity mirrors and extensions	■	■	■
Two cup holders and four bottle holders	■	■	■
Remote charge door release	■	■	■
Cargo cover			■
Auxiliary 12-volt DC power outlet	■	■	■
Seating/Appointments			
Heated front and rear seats	■	■	■
6-way manual adjustable driver's seat	■	■	■
4-way manual front-passenger's seat	■	■	■
Cloth seat trim	■		
Bio suede cloth seat trim		■	
Leather-appointed seats			■
Heated leather-wrapped steering wheel	■	■	■
60/40 Split fold-down rear seats	■	■	■
Rear seat heating and cooling ducts	■	■	■
Audio/Entertainment			
AM/FM/CD audio system with 127 mm (5.0") colour display	■		
AM/FM/CD audio system with 178 mm (7.0") colour display		■	■
Bose <sup>®</sup> Premium Audio System with AM/FM/CD			■
MP3/WMA CD playback capability	■	■	■
Four speakers	■		
Six speakers		■	
Seven speakers			■
SiriusXM <sup>®</sup> Satellite Radio <sup>11</sup>	■	■	■
Auxiliary audio input jack and USB connection port <sup>15</sup>	■	■	■
Steering wheel-mounted audio controls	■	■	■
Safety and Security			
Six standard airbags <sup>7</sup>	■	■	■
Vehicle Dynamic Control (VDC) <sup>8</sup> and Traction Control System (TCS)	■	■	■
3-point seat belts for all seating positions	■	■	■
Front seat belts with pre-tensioners and load limiters	■	■	■
Front- and rear-seat height-adjustable head restraints (outboard only)	■	■	■
LATCH System (Lower Anchors and Tethers for Children)	■	■	■
Tire Pressure Monitoring System (TPMS) with Easy-Fill Tire Alert <sup>16,17</sup>	■	■	■
Nissan Vehicle Immobilizer System	■	■	■
Vehicle Security System	■	■	■
Dimensions — mm (inches)			
Wheelbase 2700 (106.3)	Head room (front/rear)	1045/946 (41.2/37.3)	
Overall length 4445 (175)	Leg room (front/rear)	1070/847 (42.1/33.3)	
Overall width 1770 (69.7)	Hip room (front/rear)	1313/1271 (51.7/50.0)	
Overall height 1550 (61.0)	Shoulder room (front/rear)	1378/1334 (54.3/52.5)	
2017 Fuel Consumption Estimates – Le/100 km (MPGe) <sup>18</sup>			
City/Hwy 30 kWh battery: 1.9 (148)/2.3 (122)			
— Actual mileage may vary with driving conditions – for comparison only.			
■ Standard			