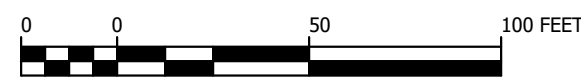


NOTES

1. BASE MAP IS BASED UPON A FIELD SURVEY PERFORMED BY SEBAGO TECHNICS IN OCTOBER OF 2006 AROUND THE EXISTING SKATE PARK. THE REMAINING SITE TOPOGRAPHY AND EXISTING CONDITIONS WAS BASED UPON PLAN REFERENCE A. STANDARD PRACTICE DICTATES THAT PLANS COMPILED IN THIS MANNER SHOULD BE FIELD VERIFIED BY THE CONTRACTOR PRIOR TO CONSTRUCTION.
2. CONTOURS FROM LOW ALTITUDE AERIAL PHOTOGRAMMETRIC MAPPING PERFORMED BY SEVEE & MAHER ENGINEERS, INC. (SME) OF CUMBERLAND, MAINE, DATED JUNE 15, 2018.
3. GROUND CONTROL BY SEVEE & MAHER ENGINEERS, INC. (SME) OF CUMBERLAND, MAINE USING PROPELLER AEROPPOINTS, DATED JUNE 22, 2017:  
HORIZONTAL DATUM - NAD83 MAINE, WEST, US FT.  
VERTICAL DATUM - NAVD 88, US FT.
4. BOUNDARY INFORMATION SHOWN HEREON IS BASED SOLEY UPON PLAN REFERENCE A. NO MONUMENTATION FROM SAID PLAN WAS FOUND. THE BOUNDARY WAS SCALED ONTO THIS PLAN UTILIZING THE BUILDING AND UTILITY INFORMATION SHOWN ON PLAN REFERENCE A AND WAS ROTATED ONTO GRID NORTH (SEE NOTE 5).
5. TEST PIT LOCATIONS FIELD SURVEYED BY SEVEE & MAHER ENGINEERS, INC. OF CUMBERLAND, MAINE.
6. A WETLAND DELINEATION WAS PERFORMED ON THIS PROJECT SITE BY GARY FULLERTON, SEBAGO TECHNICS, INC. AND LOCATED BY GROUND SURVEY. THIS DELINEATION CONFORMS TO THE STANDARDS AND METHODS OUTLINED IN THE 1987 WETLANDS DELINEATION MANUAL AUTHORED AND PUBLISHED BY THE U.S. ARMY CORPS OF ENGINEERS.
7. THE BEARINGS, COORDINATES, AND ELEVATIONS SHOWN HEREON ARE BASED UPON THE MAINE STATE PLANE COORDINATE GRID, WEST ZONE 1802 ON NAD83 AND NAVD88 IN US FEET.



DRAFT

		6/2018	SKETCH PLAN REVIEW SUBMISSION
REV.	BY	DATE	STATUS

WINDHAM COMMUNITY PARK  
TOWN OF WINDHAM  
WINDHAM, MAINE

SITE OVERVIEW PLAN

**SME**  
SEVEE & MAHER  
ENGINEERS

ENVIRONMENTAL • CIVIL • GEOTECHNICAL • WATER • COMPLIANCE

4 Blanchard Road, PO Box 85A, Cumberland, Maine 04021  
Phone 207.829.5016 • Fax 207.829.5692 • smemaine.com

DESIGN BY: DPD  
DRAWN BY: SJM  
DATE: 4/2018  
CHECKED BY: KPN/BDP  
LMN: EXCON  
CTB: SME-STD

JOB NO. 18048.00 DWG FILE BASE

C-101