

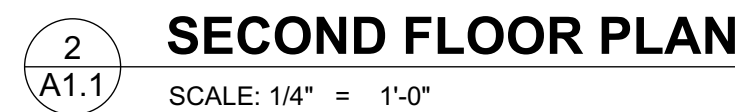
989 ROOSEVELT TRAIL
WINDHAM, ME




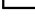

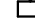


DATE:	7/30/18
CHECKED BY:	JAD
DRAWN BY:	CLBC
JOB:	HIL-18
SHEET TITLE:	

FLOOR PLANS

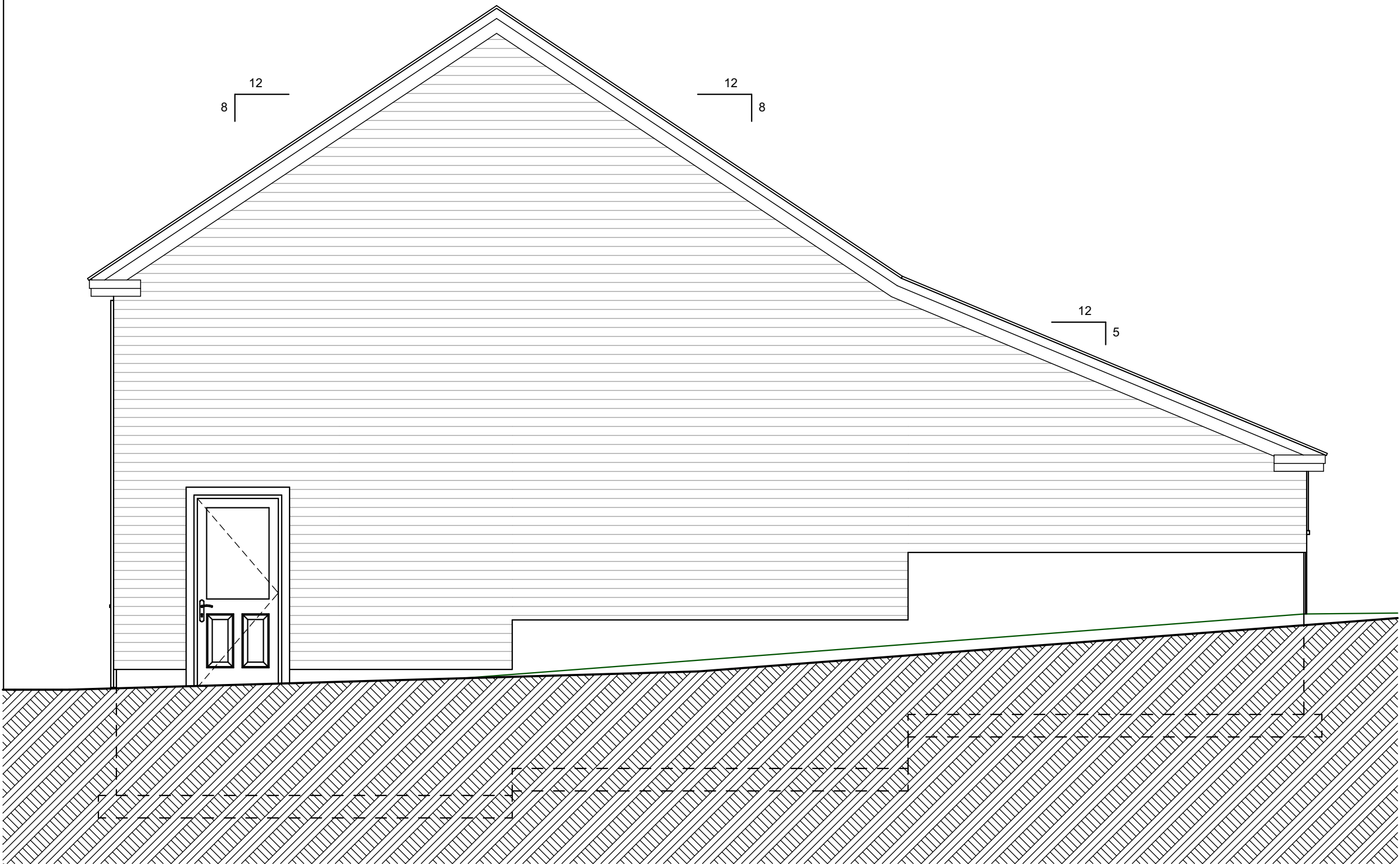
A1.1



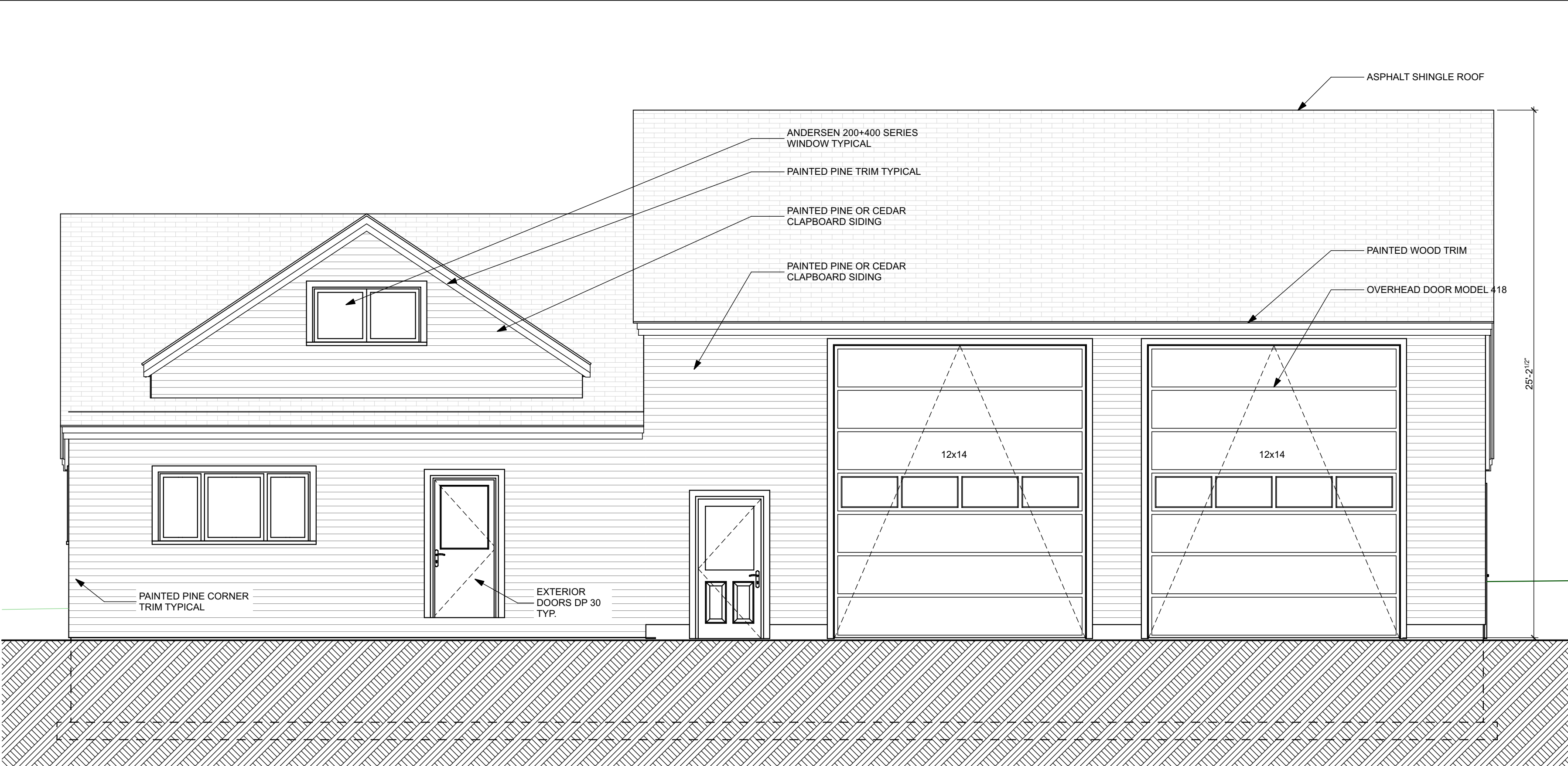
- ### LIFE SAFETY SYMBOLS
- | | |
|---|------------------------|
|  | EXIT SIGN |
|  | SMOKE DETECTOR |
|  | EMERGENCY LIGHT DOUBLE |
|  | EMERGENCY LIGHT SINGLE |
|  | HEAT DETECTOR |
|  | HORN STROBE COMBO |



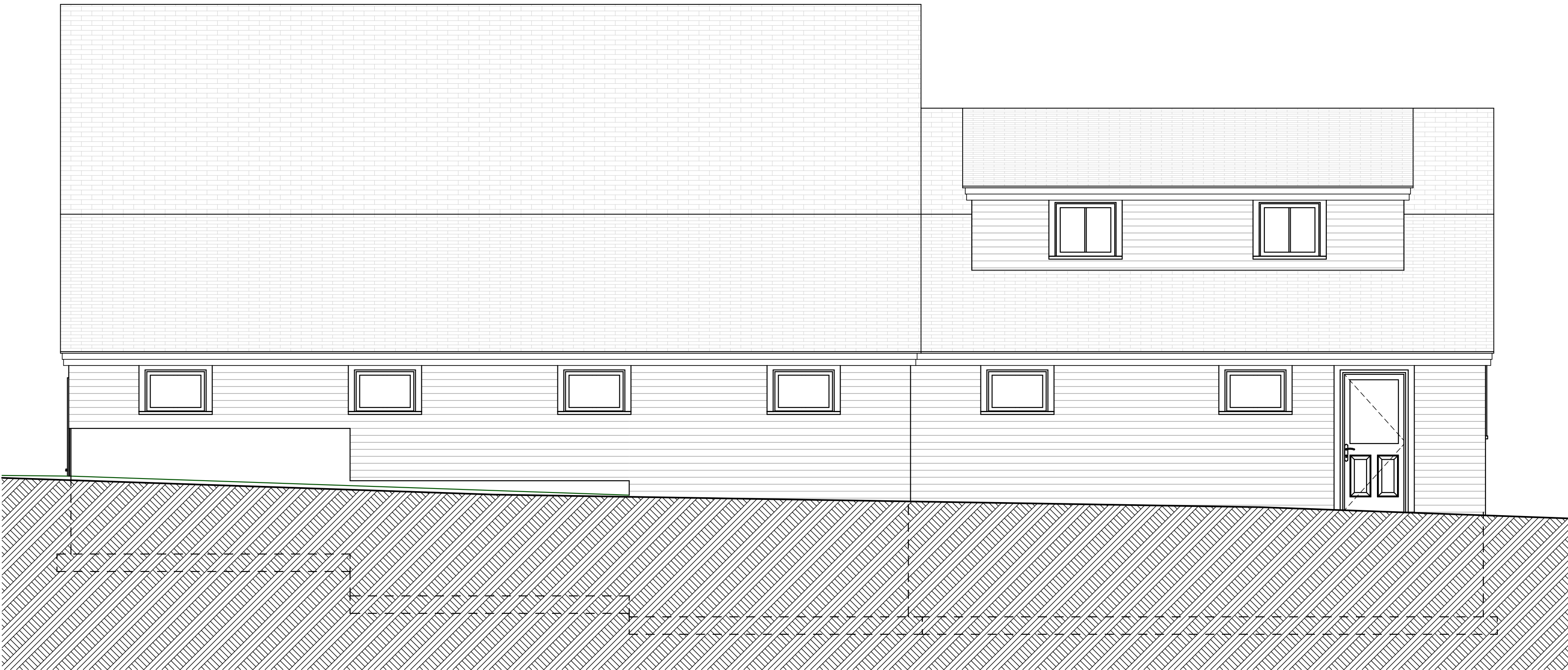
2
A2.1
ELEVATION - WEST
SCALE: 1/4" = 1'-0"



4
A2.1
ELEVATION - EAST
SCALE: 1/4" = 1'-0"




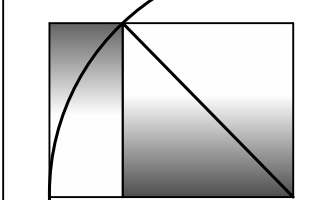
1
A2.1
ELEVATION - SOUTH
SCALE: 1/4" = 1'-0"



3
A2.1
ELEVATION - NORTH
SCALE: 1/4" = 1'-0"

HB LUMBER INC. SHOP ADDITION
989 ROOSEVELT TRAIL
WINDHAM, ME



**WHIPPLE
CALLENDER
ARCHITECTS**

136 PLEASANT AVE.
PORTLAND, ME 04103
P 207.775.3696
F 207.775.3631
www.whipplecallender.com

DESCRIPTION	DATE	MARK

DATE: 7/30/18

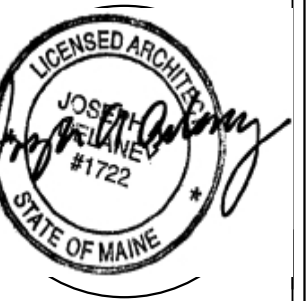
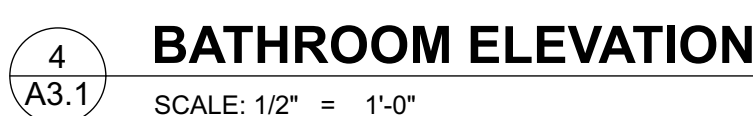
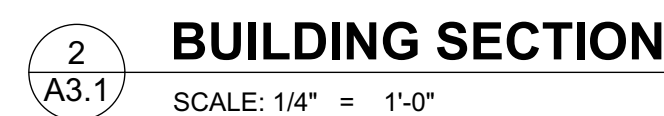
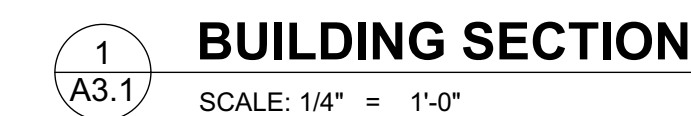
CHECKED BY: JAD

DRAWN BY: CLBC

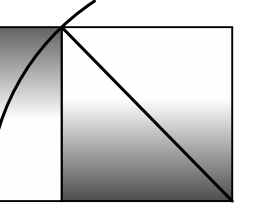
JOB: HIL-18

SHEET TITLE: ELEVATIONS

A2.1



WHIPPLE
CALLENDER
ARCHITECTS



36 PLEASANT AVE.
PORTLAND, ME 04103
207.775.2696
207.775.3631
www.whipplecallender.com

[illegible]

SECTIONS

A3.1